

O'Leary's

REMOLEA

Poll Herefords

BULL SALE

53 BULLS

Blooded

Morphology

Vibrovax

Pestigard

BEF



FRIDAY 29TH AUGUST 2025

*On-Property at Remolea | Ellangowan (via Clifton) Qld
Commencing at 1pm*

WELCOME

Welcome to our annual on Property Sale 2025

ALL ABOUT HEREFORD ~ ALL ABOUT BEEF

This year marks a special milestone for the Remolea team. Pat and Chloe have officially purchased into the farm (alongside Hilary and Dot) becoming the next generation to carry the Remolea name forward. We would like to sincerely thank Terry and Judy O'Leary for the opportunity to become involved in the business and for the enduring reputation they've established. Pat and Chloe's involvement brings a new chapter to Remolea, building on our strong foundations and long-standing success and with their first child expected in Spring, the future of the stud is looking as strong and bright as ever.

In 2025, Remolea is proud to present 53 exceptional young sires in our annual bull sale, with 42 of these bulls being homozygous polled (PP). These sires are backed by high-ranking performance data and exhibit sound phenotype for longevity, making them suitable for all aspects of the cattle industry.

The Australian cattle market in 2025 is experiencing a dynamic phase. While cattle prices have eased in the first half of the year due to high levels of supply, the outlook remains positive. Although, forecasted to climb to near record highs later in the year. The Australian cattle herd is forecasted to grow to 41.5 million head, an increase of 2.4% or 960,000 head, with continued growth in the northern herd offsetting declines in the south. This growth is driven by higher branding percentages, lower mortalities, and improvements in operational and land management of producers. Here's hoping the season and growth within the present cattle market continues and our friends in the South receive some much-needed rain.

In response to these market conditions, Remolea has embraced technology while maintaining a focus on traditional phenotypical and physical traits. Our bulls are selected for:

1. Conformation
2. Fertility & mothering ability
3. Temperament
4. Eye pigment & setting
5. Skin & hair
6. Doing ability

These traits are essential for ensuring the longevity and productivity of your herd.

Our 2025 catalogue features bulls that are:

- * 56% above breed average for calving ease direct.
- * 77% above average for 200-day weight.
- * 83% above breed average for scrotal circumference.
- * 73% above breed average for Intramuscular Fat (IMF), with fourteen (14) bulls double the breed average.
- * 56% above average for milk.

The O'Leary family extends their gratitude to Mark Duthie and GDL Dalby for their exceptional handling of the sale and their ongoing friendship and service throughout the year. We wish you the best with your purchase and thank you for your interest and competition.



*From the Team at
Remolea Poll Herefords*

O'Leary's
REMOLEA

Poll Herefords

ANNUAL BULL SALE

**Friday 29th August 2025
at 1pm**

On-Property

**"Remolea" | 304 O'Leary Road
Ellangowan (via Clifton) Qld**

53 Poll Hereford Bulls

5% commission to all agents

(Conditions apply – see Page 2)

Vendor Contacts:

Pat	0417 572 790 admin@remoleapollherefords.com.au
------------	---

Hilary	0428 959 199
---------------	--------------

www.remoleapollherefords.com.au

Selling Agents ...



DALBY OFFICE 07 4669 6955
Mark Duthie 0448 016 950
Corey Evans 0417 233 999



AuctionsPlus

SALE INFORMATION

GST: GST is to be added to the purchase price at the fall of the auctioneer's hammer. You will be invoiced the purchase price plus GST.

REBATE:

- A rebate of 5% will be paid to all agents who attend the sale with or on behalf of their client(s) and settle within 7 days of date of invoice.
- A rebate of 1% will be paid to all agents who do not attend the sale but introduce clients and settle within 7 days of date of invoice.
- **Introductions must be in writing, email or fax and can be sent to the vendors or mduthie@grantdaniellong.com.au at least 12 hours prior to the sale.**

INSPECTION: Bulls may be inspected prior to the Sale by contacting vendors or selling agents or on the morning of sale day.

HEALTH: All bulls have been vaccinated with 7 in 1, 3 Germ Blood, BEF vaccine (3day sickness), Pestigard and Vibrovax. Drenched with Commodus injectable. Tested free of Pestivirus and genetic diseases. Verified to sire. Semen and Morphology tested.

INSURANCE: There is no Vendor Insurance on Sale Bulls. It will be the responsibility of the purchasers to insure their bulls. Representatives from Insurance Companies will be at the sale and can offer insurance terms on sale bulls.

SALE VENUE: Sale venue as per map on back page is located 48 klms north west of Warwick and 64 klms south of Toowoomba.

REFRESHMENTS: Refreshments will be available on sale day.

GUARANTEE: All bulls have been semen and morphology tested and will be sold as fertile and capable of natural service at the time of sale. In the unlikely event of infertility due to reasons other than injury, disease or misadventure, the vendors will, upon the production of a mutually agreed veterinary certificate, at the purchasers expense and within six months of the date of purchase and return of the bull, issue the purchaser with a credit note equal to the price of the bull in the vendors future sales.

ACCOMMODATION:

- **Royal Hotel Leyburn** (07) 4695 0129 located 21kms from Remolea;
- **Clifton Arms Hotel** (07) 4697 3154 located 23kms from Remolea;
- **Pittsworth Motor Inn** (07) 4693 2888 located 42kms from Remolea;
- along with a wide array of accommodation in Warwick (located 48kms from Remolea) & Toowoomba (located 60kms from Remolea).



Can't make the sale?

Purchase online in eight simple steps!

Log on to AuctionsPlus and bid on your phone, tablet or computer.

1

REGISTER ONLINE

Free once off registration for all auctions.

2

COMPLETE BUYER INDUCTION

The buyer induction will help you understand the roles and responsibilities of everyone on the AuctionsPlus system.

3

VIEW CATALOGUE

View photos, videos, pedigrees and more.

4

ENTER AUCTION

Log into the auction anytime, anywhere and bid on your mobile, tablet or computer.

5

AUTO BID

Can't stay for the whole sale? Set your maximum bid on the lot that you want to purchase and let the computer bid for you.

6

CONTACT SELLING AGENT

If successful, contact selling agent to arrange payment and delivery. The agent contact details will be available in the catalogue header.

7

PAYMENT

Via the selling agent's terms and conditions.

8

DELIVERY

Arrange transport of livestock at your expense.

Contact AuctionsPlus on (02) 9262 4222
or email studsales@auctionsplus.com.au
or www.auctionsplus.com.au

Check us out on:

UNDERSTANDING EBVs

... a brief guide to breedplan

The following is a brief description of GROUP BREEDPLAN EBVs and Accuracies. GROUP BREEDPLAN is an advanced genetic evaluation system that provides a genetic description of cattle for a range of traits influencing fertility, growth and carcase performance. It provides predictions of the genetic merit of individual animals called Estimated Breeding Values (EBVs). EBVs are based on all available pedigree and performance records provided by breeders in Australia and New Zealand, along with available overseas genetic information. EBVs are expressed in the units of measurement for each particular trait, and are shown as +ive or -ive differences from the breed base. The average EBV for different traits changes over time as the breed makes genetic progress. The averages for calves born in 2015 are shown below. These averages provide a useful benchmark for comparisons of EBVs for individual animals.

ACCURACY (%) ~ Provides an indication of the reliability of an EBV. As more performance information becomes available on an animal (or it's progeny, or relatives) then the accuracy of it's EBVs for particular traits will increase. **CALVING EASE DIR (%)** ~ Estimates of the genetic differences between animals in the ability of their calves from 2 year old heifers to be delivered without assistance. **CALVING EASE DTRS (%)** ~ Estimates of the genetic differences between animals in the ability of their 2 year old daughters to calve without assistance. **GESTATION LENGTH (DAYS)** ~ Estimates of the genetic differences between animals in the number of days from the date of conception to the calf birth date. **BIRTH WT (KG)** ~ Estimates of the genetic differences between animals in calf birth weight. **200-DAY WT (KG)** ~ Estimates of the genetic differences between animals in liveweight at 200 days of age. **400-DAY WT (KG)** ~ Estimates of the genetic differences between animals in liveweight at 400 days of age. **600-DAY WT (KG)** ~ Estimates of the genetic differences between animals in liveweight at 600 days of age. **MATURE COW WEIGHT (KG)** ~ Estimates of the genetic differences between animals in cow weight at 5 years of age. **MILK (KG)** ~ Estimates of the genetic differences between animals in milk production, expressed as variation in 200-day weight of daughter's calves. **SCROTAL SIZE (CM)** ~ Estimates of the genetic differences between animals in scrotal circumference at 400 days of age. **DAYS TO CALVING** ~ Estimates of the genetic differences in female fertility, expressed as the number of days from the start of the joining period until subsequent calving. **CARCASE WEIGHT (KG)** ~ Estimates of the genetic differences between animals in carcase weight, adjusted to 650 days of age. **EYE MUSCLE AREA (CM²)** ~ Estimates of the genetic differences between animals in eye muscle area at the 12/13th rib site, in a 300kg carcase. **RIB FAT (MM)** ~ Estimates of the genetic differences between animals in fat depth at the 12/13th rib site, in a 300 kg carcase. **RUMP FAT (MM)** ~ Estimates of the genetic differences between animals in fat depth at the P8 rump site, in a 300kg carcase. **RETAIL BEEF YIELD % (RBY%)** ~ Estimates of the genetic differences between animals in percentage retail beef yield, in a 300kg carcase. **INTRA-MUSCULAR FAT % (IMF%)** ~ Estimates of the genetic differences between animals in percentage intramuscular fat (marbling) at the 12/13th rib site, in a 300 kg carcase.



Note: BREEDPLAN Figures cannot be compared between breeds, ie between Angus and Hereford/Poll Hereford. Breed Average EBVs for the 2023 Born Calves.

Breed Average EBVs for the 2023 born calves

CEDir	CEDtrs	GL	BW	200	400	600	MCW	MILK	SS	CW	EMA	RIB	RUMP	RBY%	IMF%
+4.2	+4.9	-1.0	+3.7	+35	+59	+82	+67	+18	+2.3	+56	+4.4	+0.9	+1.2	+0.9	+0.8
SUSTAINABILITY PRODUCTION INDEX								MSA PRODUCTION INDEX							
+\$148								+\$136							

COLOUR LEGEND in EBV tables:

Red = Top 10%

Yellow = Top 20%

DISCLAIMER & DELIVERY TIPS

DISCLAIMER: The owners, employees, sale staff and representatives accept no liability for accidents that occur, although these are rare at cattle sales, any person attending does so at their own risk, While all care has been taken in the preparation of this sale catalogue, the vendors accept no responsibility for any errors or omissions contained in this publication.

LANDING YOUR BULL HOME: The most important part of your new bull's future on your property is his arrival home. A couple of important things are:-

- 1) Ask your carrier to use electric prodders responsibly.
- 2) If possible have some females in the yard and keep them and the bulls in overnight. Preferably with some hay.
- 3) If females are unavailable and if time permits hold the bulls in the yard for a few days until the bull seems to be used to their new surroundings.

HornPoll

Understanding the horn / poll status of a bull is a very important aspect when determining whether a potential new bull meets your breeding objectives.

Genotype	Status	Explanation
PP Homozygous Polled	Polled	This animal possesses two copies of the poll variant of the gene. This animal is highly likely to express a polled phenotype and should always pass a poll variant to its progeny.
PH Heterozygous Polled	Carrier	This animal carries one copy of the poll variant and one copy of the horn variant of the gene. This animal is highly likely to express a polled or scurred phenotype and will transmit either the horn or poll variant to its progeny.
HH Homozygous Horned	Horned	This animal carries two copies of the horn variant of the gene. This animal is highly likely to be horned and will always transmit the horn variant to its progeny.



STUD SALES

LIVE AUCTIONS & ONLINE SALES
BULLS, FEMALES & GENETICS
PRIVATE SALES
COMMERCIAL SALES
FEEDLOT SALES

 gdrrural.com.au  

Mark Duthie	0448 016 950
Josh Heck	0409 732 676
Georgie Connor	0428 347 550
Tammie Robinson	0499 415 061
Corey Evans	0427 233 999
Simon Kinbacher	0427 735 620

SEKO ROLLERMILL FEED MIXERS



- Roll & mix full ration
- Handles all grains
- Precision chop length of fibrous product
 - Customise your options
- Various discharge elevators to suit all applications



**QUEENSLAND
MACHINERY AGENCY**

07 4696 3350 | 0447 965 555

QMA.NET.AU | Nobby Qld 4360

REFERENCE SIREs

CALLAWAY WRL HS MEGATRON M004 (AI) (TW) (PP)

Megatron was purchased in 2017, as a yearling. Megatron is sired by the well performed sire, Matariki Holy-Smoke, out of a top female with volume and style. Megatron is a high indexing sire with moderate birth, high growth, calving ease and IMF ranked in the top 10% of the breed. Megatron is breeding true to type and having a huge impact on our breeding program. Megatron sons have sold to heights of previous sales; including, Remolea Rochester R084, sold to B & C Anderson Clermont for \$26,000 in 2022; Remolea Quicksilver Q092 sold for \$22,000 in 2021 to the Bruggemann Family Trust, Taroom.

SIRE

DAM

YARRAM HOT SHOT P028 (AI) (H)
CAPETHORNE HOT SHOT 03 22 (P)
CAPETHORNE AMETHYST U21 (P)
Sire: MATARIKI HOLY - SMOKE (IMP NZL) (P)
KOANUI BULL'S-EYE R60 (P)
MATARIKI GIRLIE 00323 (P)
MATARIKI GIRLIE 3 (P)

DEVON COURT DIMBULAH (P)
NOROLLE NEW DIMENSION J270 (P)
NOROLLE CHERRY RIPE D80 (AI) (P)
Dam: KENROY LYDIA (AI) (P)
KOANUI ROCKET 0219 (IMP NZL) (P)
MARKOWEN LYDIA E61 (AI) (P)
MARKOWEN LYDIA B48 (P)

JUNE 2025 HEREFORD BREEDPLAN														Sustainability Production Index
	CEDir	CEDtrs	GL	BW	200G	400G	600G	Milk	SS	EMA	Rib	Rump	IMF	
EBV	+0.7	-10.4	-4.2	+5.2	+46	+73	+108	+19	+3.2	+2.4	+0.9	+2.0	+1.6	+5121
ACC	74%	67%	77%	95%	92%	93%	85%	92%	73%	76%	81%	79%		MSA Production Index
Ranking %	70	99	7	75	5	10	6	40	15	92	50	30	15	+5102
BWT,200WT,400WT,SS,FAT,EMA,IMF,Genomics														

WIRRUNA LEDGER L285 (AI) (PP)

Ledger was purchased in 2020 as an aged Sire, from Terraneil Poll Herefords of Western Australia. He is trait leader for 200 day, 400 day, Scrotal Size and EMA. Ledger is a proven sire who has been widely used across Australia and New Zealand. Ledger is a bull with impeccable structural soundness, with many that have seen him describing him with perfect feet. He breeds cattle with extra shape and thickness. Ledger sons have sold at Remolea to a top of \$15,000; Remolea Superior S051 sold to the Bruggemann Family Trust.

SIRE

DAM

ALLENDAL E PUNTER 3 (AI) (P)
ALLENDAL E YACKA (AI) (P)
ALLENDAL E FLORRIE Z33 (AI) (P)
Sire: ALLENDALE ANZAC E114 (PP)
ALLENDAL E NATIONAL W168 (PP)
ALLENDAL E DAWN B22 (AI) (ET) (P)
ALLENDAL E DAWN T60 (AI) (P)

GH STOUT LINE ET 87P (P)
GH ADAMS TARGET 5S (IMP CAN) (P)
GH MARY MAC 209P (H#)
Dam: WIRRUNA DOREEN G115 (AI) (P)
MOUNT DIFFICULT UNGAR (S)
WIRRUNA DOREEN A37 (AI) (P)
WIRRUNA DOREEN Y31 (AI) (P)

JUNE 2025 HEREFORD BREEDPLAN														Sustainability Production Index
	CEDir	CEDtrs	GL	BW	200G	400G	600G	Milk	SS	EMA	Rib	Rump	IMF	
EBV	+0.9	+6.3	-1.9	+4.3	+51	+81	+98	+14	+4.6	+5.5	+1.0	+2.1	+1.0	+5201
ACC	88%	81%	97%	98%	97%	96%	97%	94%	97%	84%	87%	90%	90%	MSA Production Index
Ranking %	65	45	30	60	2	3	20	80	2	25	45	25	40	+5200
GL,CE,BWT,200WT(x2),400WT,SS,FAT,EMA,IMF,DOC,Genomics														

TOBRUK QUINN Q006 (AI) (PP)

A son of the Herefords Australia Super Sire Wirruna Matty, Quinn is a high indexing calving ease sire with muscle shape and softness. Used over heifers, Quinn ranks in the top 1% of the breed for IMF and top 5% of the breed for all \$ indexes.

Quinn has grown into an impressive sire, displaying length of body, roundness and a strong head and eye.

Quinn's first run of sons sold in 2023; including Remolea Salvatore S089 selling to Quainerding Poll Herefords, WA.

SIRE

DAM

ALLENDAL E YACKA (AI) (P)
ALLENDAL E ANZAC E114 (PP)
ALLENDAL E DAWN B22 (AI) (ET) (P)
Sire: WIRRUNA MATTY M288 (AI) (ET) (PP)
ELITE 4110 E212 (AI) (PP)
WIRRUNA CIRCLE H13 (AI) (PP)
WIRRUNA CIRCLE F31 (AI) (PP)

OTAPAWA SPARK 3060 (IMP NZL) (AI) (ET) (P)
TOBRUK LENNOX (ET) (PP)
PINE HILL MARITANA A619 (AI) (P)
Dam: TOBRUK DAISY N12 (PP)
ELITE 4110 E212 (AI) (PP)
TOBRUK DAISY (AI) (P)
TOBRUK DAISY G4 (P)

JUNE 2025 HEREFORD BREEDPLAN														Sustainability Production Index
	CEDir	CEDtrs	GL	BW	200G	400G	600G	Milk	SS	EMA	Rib	Rump	IMF	
EBV	+8.7	+5.0	-4.4	+2.5	+42	+68	+90	+15	+3.3	+3.6	+0.8	+1.1	+2.7	+5209
ACC	76%	65%	79%	93%	89%	89%	90%	75%	86%	70%	72%	75%	75%	MSA Production Index
Ranking %	35	55	6	30	15	20	35	70	15	70	55	55	1	+5208
GL,BWT,400WT,SS,FAT,EMA,IMF,Genomics														

REFERENCE SIREs

DALKEITH NIPPER N082 (P)

Nipper is a sire with a lot of power and performance. Nipper has exceptional length and volume, muscle and has a terrific skin and hair type. Nipper has an exceptional set of data, combining carcass, growth and fertility. Nipper ranks in the top 1% of the breed for all dollar indexes. Another feature of the Nipper progeny is the terrific disposition they display. A Nipper son, Remolea Scone S169 topped the 2023 sale selling for \$21,000, purchased by YavenVale Herefords.

SIRE

DAM

SOUTH BUKALONG WALKER 6 (AI) (P)
SOUTH BUKALONG WALLACE 2 (P)
SOUTH BUKALONG VICTORIA 152 (P)
Sire: DALKEITH L012 (AI) (ET) (P)
MARKOWEN INVINCIBLE (S)
MARKOWEN LADYBIRD A18 (AI) (P)
MARKOWEN LADYBIRD 4 (AI) (P)

MATARIKI HOLY - SMOKE (IMP NZL) (P)
MATARIKI 100380 (IMP NZL) (P)
MATARIKI BRACELET 050223 (P)
Dam: DALKEITH MINERVA LASS L175 (AI) (P)
DALKEITH Y103 (AI) (PP)
DALKEITH MINERVA LASS 99 ET1 (AI) (ET) (S)
DALKEITH MINERVA LASS 87 (H)

JUNE 2025 HEREFORD BREEDPLAN														Sustainability Production Index
	CEDir	CEDtrs	GL	BW	200G	400G	600G	Milk	SS	EMA	Rib	Rump	IMF	
EBV	+6.8	+13.3	-2.7	+4.9	+41	+66	+93	+14	+3.6	+8.3	+1.2	+1.6	+1.8	+5208
ACC	73%	60%	92%	96%	93%	93%	94%	81%	89%	64%	73%	78%	77%	MSA Production Index
Ranking %	45	7	20	70	20	30	25	80	8	2	35	40	9	+5211
CE,BWT,200WT(x2),400WT,600WT(x2),SS,FAT,EMA,IMF,Genomics														

YAVENVALE RAINMAKER R464 (AI) (PP)

Rainmaker was purchased in 2022 for \$36,000 at which point, semen interests was sold to the Koanui Poll Hereford stud in New Zealand.

Rainmaker is an early maturing sire with easy doing attributes, depth and softness to burn wrapped in a short, fine hair type. He features calving ease, breed leading short gestation, above average growth, top 1% fats and top 15% IMF.

SIRE

DAM

ALLENDAL E WATERLOO B50 (AI) (P)
MINLACOWIE GRIFFIN (PP)
MINLACOWIE SALLY D120 (AI) (P)
Sire: YAVENVALE KINGPIN K317 (PP)
SOUTH BUKALONG WALLACE 2 (P)
YAVENVALE TREASURE D403 (P)
YAVENVALE TREASURE B247 (H)

VALMA ODYSSEY (PP)
YAVENVALE GUARDSMAN G471 (AI) (P)
YAVENVALE DUCHESS D127 (AI) (P)
Dam: YAVENVALE JULIET M535 (P)
KIDMAN THINK BIG E31 (AI) (TW) (P)
YAVENVALE JULIET J031 (P)
YAVENVALE JULIET E520 (H)

JUNE 2025 HEREFORD BREEDPLAN														Sustainability Production Index
	CEDir	CEDtrs	GL	BW	200G	400G	600G	Milk	SS	EMA	Rib	Rump	IMF	
EBV	+15.1	+7.8	-9.2	+3.0	+36	+70	+100	+16	+2.8	+3.4	+3.0	+4.8	+1.6	+5183
ACC	64%	49%	94%	95%	91%	90%	90%	69%	87%	64%	67%	72%	71%	MSA Production Index
Ranking %	15	35	1	40	45	20	15	65	30	75	1	1	15	+5178
GL,BWT,200WT,400WT,SS,FAT,EMA,IMF,Genomics														

YAVENVALE NOCKOUT N312 (AI) (PP)

Nockout is a rare and special, curve bending sire. He has an exceptional spread of data consisting of top 5% calving ease, gestation length, 400, and 600 day weight. He also drops back to below average for Mature Cow Weight. This means Nockout breeds cattle with high growth, yet moderate and low maintenance for easy keeping females. Nockout also boasts high milk, scrotal and top 1% IMF. Nockout is breeding very consistently across Australia and New Zealand. A bull that adds value and profitability to modern and progressive beef herds. *First sons sold at Yavenvale in 2022 for a top of \$28,000 with an average of \$15,000 and a maternal brother making \$74,000.*

SIRE

DAM

WIRRUNA EXPLORER E188 (AI) (ET) (P)
WIRRUNA HARTWIG E297 (P)
WIRRUNA MIDGE A51 (AI) (P)
Sire: WIRRUNA KALIMNA K326 (PP)
ARDO HUSTLER 4110 (IMP NZL) (P)
WIRRUNA CORA H303 (AI) (ET) (P)
WIRRUNA CORA D9 (AI) (P)

ALLENDAL E WATERLOO B50 (AI) (P)
MINLACOWIE GRIFFIN (PP)
MINLACOWIE SALLY D120 (AI) (P)
Dam: YAVENVALE CORISANDE L385 (AI) (ET) (PP)
GRASSMERE SPARK 555 (IMP NZL) (PP)
YAVENVALE CORISANDE H143 (AI) (P)
YAVENVALE CORISANDE C443 (P)

JUNE 2025 HEREFORD BREEDPLAN														Sustainability Production Index
	CEDir	CEDtrs	GL	BW	200G	400G	600G	Milk	SS	EMA	Rib	Rump	IMF	
EBV	+16.1	+10.8	-2.3	+1.4	+42	+73	+101	+36	+4.5	+3.0	+1.4	+1.4	+2.3	+5229
ACC	82%	72%	97%	98%	97%	97%	97%	93%	97%	84%	86%	89%	89%	MSA Production Index
Ranking %	15	20	25	20	15	10	15	1	2	85	25	45	3	+5212
GL,BWT,400WT(x2),SS,FAT,EMA,IMF,Genomics														

REFERENCE SIREs

TOBRUK SHEPHERD S33 (AI) (ET) (PP)

S33 introduces an exceptional cow (Tobruk Rose J6) into the Remolea herd. He is also a half brother to Tobruk Southern Cross S15 who was purchased for the highest price within the yearling Hereford bull category (\$91,000).

Shepherd offers curve bending EBVs combining low birth weight, above average growth and high value carcase data.

Shepherd has bred early maturing cattle with plenty of carcase and fleshing ability.

SIRE

DAM

NJW 735 M326 TRUST 100W ET (IMP USA) (ET) (P)
ELITE TRUST K215 (AI) (S)
ELITE RUTH 0219 D163 (AI) (P)
Sire: GLENTREVOR TRUST N909 (AI) (PP)
SOUTH BUKALONG WALLACE 2 (P)
GLENTREVOR SIRIKIT J504 (AI) (P)
GLENTREVOR SIRIKIT F252 (P)

DOONBIDDIE HUSTLER (AI) (PP)
ARDO HUSTLER 4110 (IMP NZL) (P)
ARDO AMETHYST 730 (P)
Dam: TOBRUK ROSE J6 (ET) (PP)
MOUNT DIFFICULT FELLIS Y12 (AI) (P)
PINE HILL MARITANA A619 (AI) (P)
PINE HILL MARITANA W575 (AI) (P)

JUNE 2025 HEREFORD BREEDPLAN

	CEDir	CEDtrs	GL	BW	200G	400G	600G	Milk	SS	EMA	Rib	Rump	IMF	Sustainability Production Index
EBV	+0.7	+11.8	-3.1	+2.1	+37	+66	+100	+16	+3.8	+5.4	+1.4	+1.6	+2.2	+\$195
ACC	68%	58%	81%	85%	87%	87%	88%	74%	85%	69%	71%	75%	75%	MSA Production Index
Ranking %	70	15	15	25	40	30	15	65	6	25	25	40	4	+\$191

BWT,200WT(x2),SS,FAT,EMA,IMF,DOC,Genomics

REFERENCE SIREs

TREFOIL PARK FAIRFAX S014 (AI) (PP)

Fairfax was purchased as a yearling in 2022. He is a high growth sire who breeds weight for age and cattle that are as long as a train. He offers top 2% 200 day, top 7% 400 and 600 day weights and top 8% scrotal size.

SIRE

DAM

ALLENDALDE YACKA (AI) (P)
ALLENDALDE ANZAC E114 (PP)
ALLENDALDE DAWN B22 (AI) (ET) (P)
Sire: WIRRUNA NIXON N168 (AI) (TW) (PP)
ELITE 4110 E212 (AI) (PP)
WIRRUNA DIDO H45 (AI) (PP)
WIRRUNA DIDO F371 (ET) (P)

MATARIKI HOLY - SMOKE (IMP NZL) (P)
YARRANDABBIE JINGLE J018 (AI) (PP)
OSULLIVANS FANCY A65 (AI) (ET) (P)
Dam: TREFOIL PARK FANCY P004 (AI) (P)
TREFOIL PARK BATAVIA Y3 (AI) (S)
TREFOIL PARK FANCY E24 (P)
TREFOIL PARK FANCY X44 (AI) (P)

JUNE 2025 HEREFORD BREEDPLAN

	CEDir	CEDtrs	GL	BW	200G	400G	600G	Milk	SS	EMA	Rib	Rump	IMF	Sustainability Production Index
EBV	-29.1	+3.8	-1.3	+8.3	+51	+76	+107	+14	+3.6	+4.2	+0.8	+1.6	+1.2	+\$100
ACC	62%	52%	77%	88%	82%	81%	82%	68%	78%	59%	62%	66%	65%	MSA Production Index
Ranking %	99	60	40	99	2	7	7	80	8	50	55	40	30	+\$79

GL,200WT,Genomics

ALL ABOUT HEREFORD ~ ALL ABOUT BEEF ~



Paddock TO PLATE

from 100 day
grain fed
REMOLEA STEERS
supplied to
Ashton's
butcheries,
Pittsworth
& Dalby

The first Rainmaker son to be offered at Remolea. Appreciate the balance and structural correctness he has to offer. Unhinged also offers muscle shape and a good maturity pattern. He offers low birth weight, short gestation and high calving ease.

HOMOZYGOUS POLLED.

Lot 1 REMOLEA UNHINGED U005 (PP)

BORN: 12/07/2023 **MOLU005** **EYE PIGMENT:** 100/100

MINLACOWIE GRIFFIN (PP)
YAVENVALE KINGPIN K317 (PP)
YAVENVALE TREASURE D403 (P)
Sire: YAVENVALE RAINMAKER R464 (AI) (PP)
YAVENVALE GUARDSMAN G471 (AI) (P)
YAVENVALE JULIET M535 (P)
YAVENVALE JULIET J031 (P)
WIRRUNA KALIMNA K326 (PP)
YAVENVALE NOCKOUT N312 (AI) (PP)
YAVENVALE CORISANDE L385 (AI) (ET) (PP)
Dam: REMOLEA KIMINO R044 (P)
YAVENVALE FUTURA F228 (P)
REMOLEA KIMINO N042 (P)
REMOLEA KIMINO K82 (P)

Genetic status:
POLL C-Homozygous Polled
(PPCc)JEF-HYF-DLF

JUNE 2025 HEREFORD BREEDPLAN													Sustainability Production Index
	CEDir	CEDtrs	GL	BW	200G	400G	600G	Milk	SS	EMA	Rib	Rump	IMF
EBV	+15.3	+5.3	-4.9	+1.1	+33	+59	+81	+20	+3.3	+3.2	+2.3	+3.4	+1.0
ACC	56%	43%	74%	79%	77%	76%	77%	62%	77%	54%	57%	61%	60%
Ranking %	15	50	4	15	60	50	55	35	15	80	5	5	40
CE,BWT,200WT,400WT,600WT,SS,FAT,EMA,IMF,Genomics													MSA Production Index
													+172

Purchaser: _____ Price: \$ _____



Urge is a powerful sire who offers length, high growth (ranked in the top 1%), large scrotal size, positive calving ease and short gestation length. Top 2% IMF. Maternal brother, (Remolea Reporter R038,) sold in 2022 to Lindsay Johnston. Full brother Remolea Troy T110, was retained and used over stud heifers last year. **HOMOZYGOUS POLLED.**

Lot 2 REMOLEA URGE U043 (TW) (PP)

BORN: 05/08/2023 **MOLU043** **EYE PIGMENT:** 100/100

CAPETHORNE HOT SHOT 03 22 (P)
MATARIKI HOLY - SMOKE (IMP NZL) (P)
MATARIKI GIRLIE 00323 (P)
Sire: CALLAWAY WRL HS MEGATRON M004 (AI) (TW) (PP)
NOROLLE NEW DIMENSION J270 (P)
KENROY LYDIA (AI) (P)
MARKOWEN LYDIA E61 (AI) (P)
YAMBRO CONRAD B88 (P)
RUSSLYNN JACK FLASH (P)
RUSSLYNN PURITY E33 (AI) (P)
Dam: REMOLEA JANE N095 (P)
BOWEN ESPLANADE E332 (AI) (PP)
REMOLEA JANE H44 (TW) (P)
REMOLEA JANE Z146 (P)

Genetic status:
POLL C-Homozygous Polled
(PPCc)JEF-HYF-DLF

JUNE 2025 HEREFORD BREEDPLAN													Sustainability Production Index
	CEDir	CEDtrs	GL	BW	200G	400G	600G	Milk	SS	EMA	Rib	Rump	IMF
EBV	+6.3	+0.5	-3.7	+5.6	+52	+87	+132	+20	+4.8	+2.7	+1.8	+3.5	+2.4
ACC	59%	49%	70%	79%	77%	76%	78%	65%	78%	56%	58%	62%	61%
Ranking %	45	80	10	80	1	1	1	35	1	90	15	4	2
BWT,200WT,400WT,600WT,SS,FAT,EMA,IMF,Genomics													MSA Production Index
													+165

Purchaser: _____ Price: \$ _____



U022 is a stylish Megatron son offering a sire's head, good skin and hair, high growth, large scrotal size, positive fats and above average IMF. From a very consistent cow who has produced 3 previous sale bulls including Remolea Pitch P014 sold to WRL Herefords. **HOMOZYGOUS POLLED.**

Lot 3 REMOLEA UTOPIA U022 (PP)

BORN: 03/08/2023 **MOLU022** **EYE PIGMENT:** 100/100

CAPETHORNE HOT SHOT 03 22 (P)
MATARIKI HOLY - SMOKE (IMP NZL) (P)
MATARIKI GIRLIE 00323 (P)
Sire: CALLAWAY WRL HS MEGATRON M004 (AI) (TW) (PP)
NOROLLE NEW DIMENSION J270 (P)
KENROY LYDIA (AI) (P)
MARKOWEN LYDIA E61 (AI) (P)
DUNOON DIAMANTINA D651 (AI) (S)
BOWEN GEORGE G25 (P)
BOWEN RUTH Z324 (AI) (P)
Dam: REMOLEA MARJORIE L023 (P)
KROY PARK ZEST Z34 (P)
REMOLEA MARJORIE H30 (P)
REMOLEA MARJORIE A26 (P)

Genetic status:
POLL C-Homozygous Polled
(PPCc)JEF-HYF-DLF

JUNE 2025 HEREFORD BREEDPLAN													Sustainability Production Index
	CEDir	CEDtrs	GL	BW	200G	400G	600G	Milk	SS	EMA	Rib	Rump	IMF
EBV	-3.0	-0.9	-4.1	+6.5	+45	+72	+111	+14	+3.7	+1.5	+1.1	+2.1	+1.2
ACC	58%	48%	69%	79%	77%	76%	78%	66%	78%	56%	58%	62%	61%
Ranking %	80	85	7	90	7	15	5	80	7	98	40	25	30
CE,BWT,200WT,400WT,600WT,SS,FAT,EMA,IMF,Genomics													MSA Production Index
													+122

Purchaser: _____ Price: \$ _____



A soft and fleshy Megatron son who oozes balance and quality. He offers a terrific skin and hair type, calving ease, short gestation and below average birth. U188 is a viable heifer bull option. Maternal brother sold in 2022 to Meeleebie Downs. HETEROZYGOUS POLLED.

Lot 4 REMOLEA URALBA U188 (P)

BORN: 26/09/2023 **MOLU188** **EYE PIGMENT:** 100/100

CAPETHORNE HOT SHOT 03 22 (P)
MATARIKI HOLY - SMOKE (IMP NZL) (P)
MATARIKI GIRLIE 00323 (P)
Sire: CALLAWAY WRL HS MEGATRON M004 (AI) (TW) (PP)
NOROLLE NEW DIMENSION J270 (P)
KENROY LYDIA (AI) (P)
MARKOWEN LYDIA E61 (AI) (P)
EVESHAM MONTANA Z18 (P)
EVESHAM BOMBER B52 (S)
EVESHAM CARMENA Y9 (AI) (ET) (P)
Dam: REMOLEA LOVELY L048 (H#)
KIDMAN CONDOR U188 (P)
REMOLEA LOVELY A143 (P)
REMOLEA LOVELY L92 (P)

Genetic status:
POLL C-Heterozygous Polled
(HPc),IEF-HYF-DLF,

JUNE 2025 HEREFORD BREEDPLAN														Sustainability Production Index
	CEDir	CEDtrs	GL	BW	200G	400G	600G	Milk	SS	EMA	Rib	Rump	IMF	
EBV	+6.4	-2.5	-2.5	+3.5	+30	+57	+92	+13	+3.5	+1.1	+0.7	+1.6	+0.3	+517
ACC	58%	49%	69%	79%	76%	75%	77%	66%	77%	54%	58%	62%	60%	MSA Production Index
Ranking %	45	90	20	45	75	60	30	85	9	99	60	40	80	+595
BWT,200WT,400WT,600WT,SS,FAT,EMA,IMF,Genomics														

Purchaser: _____ Price: \$ _____



A Ledger son with softness, balance and sire appeal. He offers high growth EBVs, top 1% scrotal size, short days to calving, carcass quantity and quality. HOMOZYGOUS POLLED.

Lot 5 REMOLEA UPTOWN U185 (PP)

BORN: 24/09/2023 **MOLU185** **EYE PIGMENT:** 100/100

ALLENDALE YACKA (AI) (P)
ALLENDALE ANZAC E114 (PP)
ALLENDALE DAWN B22 (AI) (ET) (P)
Sire: WIRRUNA LEDGER L285 (AI) (PP)
GH ADAMS TARGET 5S (IMP CAN) (P)
WIRRUNA DOREEN G115 (AI) (P)
WIRRUNA DOREEN A37 (AI) (P)
GRASSMERE SPARK 555 (IMP NZL) (PP)
BOWEN SPARK L76 (AI) (PP)
BOWEN LEONORA E117 (P)
Dam: REMOLEA IRISH MAID P087 (P)
KROY PARK ZEST Z34 (P)
REMOLEA IRISH MAID D11 (P)
REMOLEA IRISH MAID A104 (P)

Genetic status:
POLL C-Homozygous Polled
(PPc),IEF-HYF-DLF,

JUNE 2025 HEREFORD BREEDPLAN														Sustainability Production Index
	CEDir	CEDtrs	GL	BW	200G	400G	600G	Milk	SS	EMA	Rib	Rump	IMF	
EBV	-14.0	-2.7	-1.0	+7.7	+51	+83	+107	+21	+5.2	+5.4	+2.4	+3.8	+1.9	+5163
ACC	63%	55%	74%	80%	78%	77%	79%	70%	78%	59%	61%	65%	64%	MSA Production Index
Ranking %	97	91	50	97	2	3	7	30	1	25	4	3	7	+5149
BWT,200WT,400WT,600WT,SS,FAT,EMA,IMF,Genomics														

Purchaser: _____ Price: \$ _____



U129 offers terrific thickness, muscle shape and fleshing ability. He offers a very profitable set of EBVs combining super high calving ease, short gestation length, very low birth weight and above average growth, scrotal size and positive fats. HETEROZYGOUS POLLED.

Lot 6 REMOLEA UNANIMOUS U129 (S)

BORN: 28/08/2023 **MOLU129** **EYE PIGMENT:** 100/100

MINLACOWIE GRIFFIN (PP)
YAVENVALE KINGPIN K317 (PP)
YAVENVALE TREASURE D403 (P)
Sire: YAVENVALE RAINMAKER R464 (AI) (PP)
YAVENVALE GUARDSMAN G471 (AI) (P)
YAVENVALE JULIET M535 (P)
YAVENVALE JULIET J031 (P)
ARDO HUSTLER 4110 (IMP NZL) (P)
ELITE 4110 F88 (AI) (S)
ELITE ORCHESTRA Y12 B2 (AI) (P)
Dam: REMOLEA LADY P006 (P)
CANNAWIGRA TRANSFORMER B66 (P)
REMOLEA LADY G17 (P)
REMOLEA LADY D33 (P)

Genetic status:
POLL C-Heterozygous Polled
(HPc),IEF-HYF-DLF,

JUNE 2025 HEREFORD BREEDPLAN														Sustainability Production Index
	CEDir	CEDtrs	GL	BW	200G	400G	600G	Milk	SS	EMA	Rib	Rump	IMF	
EBV	+23.8	+13.7	-3.9	-0.3	+32	+67	+91	+17	+3.1	+4.9	+2.3	+3.7	+1.2	+5201
ACC	55%	42%	74%	79%	77%	75%	77%	62%	77%	52%	55%	59%	58%	MSA Production Index
Ranking %	1	6	8	4	70	25	30	55	20	35	5	3	30	+5201
BWT,200WT,400WT,600WT,SS,FAT,EMA,IMF,Genomics														

Purchaser: _____ Price: \$ _____



Uganda boasts sire appeal. A modern-day beef bull. Admire his weight for age, thickness, depth of body and outstanding data set. He offers calving ease, short gestation, low birth weight, curve bending growth with MSA boosting carcass data. **HOMOZYGOUS POLLED.**

Lot 7 REMOLEA UGANDA U222 (PP)

BORN: 04/11/2023 **MOLU222** **EYE PIGMENT:** 100/100

WIRRUNA HARTWIG H297 (P)
WIRRUNA KALIMNA K326 (PP)
WIRRUNA CORA H303 (AI) (ET) (P)
Sire: YAVENVALE NOCKOUT N312 (AI) (PP)
MINLACOWIE GRIFFIN (PP)
YAVENVALE CORISANDE L385 (AI) (ET) (PP)
YAVENVALE CORISANDE H143 (AI) (P)
DUNOON DIAMANTINA D651 (AI) (S)
BOWEN GEORGE G25 (P)
BOWEN RUTH Z324 (AI) (P)
Dam: REMOLEA NEEDFULL L114 (P)
BOWEN ESPLANADE E332 (AI) (PP)
REMOLEA NEEDFULL H72 (P)
REMOLEA NEEDFULL W118 (P)

Genetic status:
POLL C-Homozygous Polled
(PPCc)JIEF-HYF-DLF

JUNE 2025 HEREFORD BREEDPLAN														Sustainability Production Index
	CEDir	CEDtrs	GL	BW	200G	400G	600G	Milk	SS	EMA	Rib	Rump	IMF	
EBV	+10.8	+5.2	-4.5	+2.7	+44	+77	+106	+21	+3.3	+4.2	+1.4	+2.3	+1.9	+\$217
ACC	63%	52%	75%	80%	78%	78%	79%	69%	79%	60%	62%	65%	65%	MSA Production Index
Ranking %	30	50	6	35	9	6	8	30	15	50	25	20	7	+\$210
BWT,200WT,400WT,600WT,SS,FAT,EMA,IMF,Genomics														

Purchaser: _____ Price: \$ _____



U206 is a Quinn son with a good top line, depth of body and weight for age. A very desirable data set boasting high calving ease, short gestation length, low birth weight, high growth, above average milk, positive fats and top 2% IMF. **HOMOZYGOUS POLLED.**

Lot 8 REMOLEA ULTRA-VIOLET U206 (PP)

BORN: 12/10/2023 **MOLU206** **EYE PIGMENT:** 100/100

ALLENDALE ANZAC E114 (PP)
WIRRUNA MATTY M288 (AI) (ET) (PP)
WIRRUNA CIRCLE H13 (AI) (PP)
Sire: TOBRUK QUINN Q006 (AI) (PP)
TOBRUK LENNOX (ET) (PP)
TOBRUK DAISY N12 (PP)
TOBRUK DAISY (AI) (P)
WIRRUNA KALIMNA K326 (PP)
YAVENVALE NOCKOUT N312 (AI) (PP)
YAVENVALE CORISANDE L385 (AI) (ET) (PP)
Dam: REMOLEA LADY R033 (P)
BOWEN ESPLANADE E332 (AI) (PP)
REMOLEA LADY N064 (P)
REMOLEA LADY B07 (P)

Genetic status:
POLL C-Homozygous Polled
(PPCc)JIEF-HYF-DLF

JUNE 2025 HEREFORD BREEDPLAN														Sustainability Production Index
	CEDir	CEDtrs	GL	BW	200G	400G	600G	Milk	SS	EMA	Rib	Rump	IMF	
EBV	+15.6	+8.5	-4.7	+1.9	+40	+67	+91	+20	+2.8	+2.1	+1.1	+1.0	+2.4	+\$195
ACC	60%	49%	71%	79%	76%	75%	77%	64%	76%	56%	58%	61%	61%	MSA Production Index
Ranking %	15	30	5	25	25	25	30	35	30	95	40	60	2	+\$188
BWT,200WT,400WT,600WT,SS,FAT,EMA,IMF,Genomics														

Purchaser: _____ Price: \$ _____



Uppercut is a Ledger son full of red meat. He offers high growth, large scrotal size and top 9% EMA wrapped in a dark, sleek coat. **HOMOZYGOUS POLLED.**

Lot 9 REMOLEA UPPERCUT U062 (PP)

BORN: 13/08/2023 **MOLU062** **EYE PIGMENT:** 100/100

ALLENDALE YACKA (AI) (P)
ALLENDALE ANZAC E114 (PP)
ALLENDALE DAWN B22 (AI) (ET) (P)
Sire: WIRRUNA LEDGER L285 (AI) (PP)
GH ADAMS TARGET 5S (IMP CAN) (P)
WIRRUNA DOREEN G115 (AI) (P)
WIRRUNA DOREEN A37 (AI) (P)
ALLENDALE ANZAC H181 (ET) (PP)
KERLSON PINES LEDGER L154 (PP)
KERLSON PINES MISS NANCY H8 (AI) (P)
Dam: WRL NYLETA P063 (P)
REMOLEA GENERAL G51 (S)
WRL NGLETA K921 (H#)
WRL NGLETA H086 (H)

Genetic status:
POLL C-Homozygous Polled
(PPCc)JIEF-HYF-DLF

JUNE 2025 HEREFORD BREEDPLAN														Sustainability Production Index
	CEDir	CEDtrs	GL	BW	200G	400G	600G	Milk	SS	EMA	Rib	Rump	IMF	
EBV	-8.5	+5.5	-4.4	+6.0	+50	+82	+110	+13	+3.3	+6.5	-0.7	-1.2	-0.2	+\$170
ACC	63%	54%	75%	80%	78%	77%	79%	69%	78%	59%	61%	64%	64%	MSA Production Index
Ranking %	91	50	6	85	2	3	5	85	15	9	96	98	94	+\$148
CE,BWT,200WT,400WT,600WT,SS,FAT,EMA,IMF,Genomics														

Purchaser: _____ Price: \$ _____



A stylish Nockout son with neck extension and a smooth shoulder. Positive calving ease and low birth weight suggest an appealing option for heifer joining. Above average milk and positive fats. **HOMOZYGOUS POLLED.**

Lot 10 REMOLEA UPSTART U174 (PP)

BORN: 09/09/2023 **MOLU**174 **EYE PIGMENT:** 100/100

WIRRUNA HARTWIG H297 (P)
WIRRUNA KALIMNA K326 (PP)
WIRRUNA CORA H303 (AI) (ET) (P)
Sire: YAVENVALE NOCKOUT N312 (AI) (PP)
MINLACOWIE GRIFFIN (PP)
YAVENVALE CORISANDE L385 (AI) (ET) (PP)
YAVENVALE CORISANDE H143 (AI) (P)
KOANUI UNANIMOUS 3152 (IMP NZL) (PP)
YALGOO ZAC F083 (AI) (P)
YALGOO ZELDA B054 (P)
Dam: REMOLEA GEM L022 (P)
BOWEN ULTRA U40 (P)
REMOLEA GEM E44 (P)
REMOLEA GEM X36 (P)

Genetic status:
POLL C-Homozygous Polled
(PPCc),IEF-HYF-DLF,

JUNE 2025 HEREFORD BREEDPLAN

	CEDir	CEDtrs	GL	BW	200G	400G	600G	Milk	SS	EMA	Rib	Rump	IMF	Sustainability Production Index
EBV	+10.1	+9.4	+0.7	+2.4	+34	+49	+67	+20	+2.7	+2.6	+1.2	+1.7	+0.9	+\$156
ACC	62%	52%	74%	79%	78%	77%	78%	69%	78%	59%	61%	65%	64%	MSA Production Index
Ranking %	30	25	80	30	55	85	85	35	35	90	35	35	45	+\$153

BWT,200WT,400WT,600WT,SS,FAT,EMA,IMF,Genomics

Purchaser: _____ Price: \$ _____



A Nipper son with muscle content and depth of body. He features a dark coat and great hair type with big red eyes. From an outstanding cow, producing 4 previous sons (selling to a top of \$12,000). **HETEROZYGOUS POLLED.**

Lot 11 REMOLEA UMBRIDGE U069 (P)

BORN: 13/08/2023 **MOLU**069 **EYE PIGMENT:** 100/100

SOUTH BUKALONG WALLACE 2 (P)
DALKEITH L012 (AI) (ET) (P)
MARKOWEN LADYBIRD A18 (AI) (P)
Sire: DALKEITH NIPPER N082 (P)
MATARIKI 100380 (IMP NZL) (P)
DALKEITH MINERVA LASS L175 (AI) (P)
DALKEITH MINERVA LASS 99 ET1 (AI) (ET) (S)
OTAPAWA SPARK 3060 (IMP NZL) (AI) (ET) (P)
TREFOIL PARK BLAIR F35 (AI) (P)
TREFOIL PARK BLUSH C3 (AI) (P)
Dam: REMOLEA PAGAN J56 (P)
KYAN RAMBO (AI) (P)
REMOLEA PAGAN Z53 (P)
REMOLEA PAGAN Q11 (P)

Genetic status:
POLL C-Heterozygous Polled
(HPc),IEF-HYF-DLF,

JUNE 2025 HEREFORD BREEDPLAN

	CEDir	CEDtrs	GL	BW	200G	400G	600G	Milk	SS	EMA	Rib	Rump	IMF	Sustainability Production Index
EBV	+3.4	+3.2	-3.5	+4.4	+40	+64	+93	+20	+4.2	+5.7	+0.6	+0.9	+1.7	+\$166
ACC	59%	47%	73%	80%	77%	77%	78%	65%	78%	55%	57%	62%	61%	MSA Production Index
Ranking %	60	65	15	60	25	35	25	35	3	20	65	60	10	+\$156

CE,BWT,200WT,400WT,600WT,SS,FAT,EMA,IMF,Genomics

Purchaser: _____ Price: \$ _____



U123 features softness, phenotype and performance. He offers high growth, milk, scrotal size and top 3% IMF. A bull to add value to self-replacing herds. **HOMOZYGOUS POLLED**

Lot 12 REMOLEA UNBRANDED U123 (PP)

BORN: 26/08/2023 **MOLU**123 **EYE PIGMENT:** /

ALLENDALDE ANZAC E114 (PP)
WIRRUNA MATTY M288 (AI) (ET) (PP)
WIRRUNA CIRCLE H13 (AI) (PP)
Sire: TOBRUK QUINN Q006 (AI) (PP)
TOBRUK LENNOX (ET) (PP)
TOBRUK DAISY N12 (PP)
TOBRUK DAISY (AI) (P)
MATARIKI HOLY - SMOKE (IMP NZL) (P)
CALLAWAY WRL HS MEGATRON M004 (AI) (TW) (PP)
KENROY LYDIA (AI) (P)
Dam: REMOLEA MARJORIE Q047 (P)
RUSSLYNN JACK FLASH (P)
REMOLEA MARJORIE M009 (P)
REMOLEA MARJORIE J66 (P)

Genetic status:
POLL C-Homozygous Polled
(PPCc),IEF-HYF-DLF,

JUNE 2025 HEREFORD BREEDPLAN

	CEDir	CEDtrs	GL	BW	200G	400G	600G	Milk	SS	EMA	Rib	Rump	IMF	Sustainability Production Index
EBV	+0.9	+2.2	-3.0	+6.0	+49	+74	+109	+24	+4.0	+4.3	+1.1	+1.9	+2.3	+\$189
ACC	60%	49%	71%	79%	76%	76%	77%	64%	76%	55%	57%	61%	61%	MSA Production Index
Ranking %	65	70	15	85	3	9	6	15	4	50	40	30	3	+\$174

200WT,400WT,600WT,SS,FAT,EMA,IMF,Genomics

Purchaser: _____ Price: \$ _____



A powerful Nockout son with a sire's outlook. Appreciate the strong topline and length of body. U740 offers calving ease, high growth and top 2% milk. **HOMOZYGOUS POLLED**

Lot 13 REMOLEA UMBIRAN U740 (TW) (PP)

BORN: 13/08/2023 **MOLU**U740 **EYE PIGMENT:** 100/100

WIRRUNA HARTWIG H297 (P)
WIRRUNA KALIMNA K326 (PP)
WIRRUNA CORA H303 (AI) (ET) (P)
Sire: YAVENVALE NOCKOUT N312 (AI) (PP)
MINLACOWIE GRIFFIN (PP)
YAVENVALE CORISANDE L385 (AI) (ET) (PP)
YAVENVALE CORISANDE H143 (AI) (P)
KARINA CHERRY Z8 (PP)
TYCOLAH MCCOY J122 (P)
TYCOLAH COUNTESS F33 (P)
Dam: REMOLEA NEEDFULL P106 (P)
THE COTTAGE MURRAY A18 (P)
REMOLEA NEEDFULL E91 (P)
REMOLEA NEEDFULL V113 (P)

Genetic status:
POLL C-Homozygous Polled
(PPc),IEF-HYF-DLF.

JUNE 2025 HEREFORD BREEDPLAN

	CEDir	CEDtrs	GL	BW	200G	400G	600G	Milk	SS	EMA	Rib	Rump	IMF	Sustainability Production Index
EBV	+8.2	+11.1	-1.7	+3.1	+42	+73	+104	+29	+3.0	+2.5	-0.6	-0.9	+1.0	+\$186
ACC	61%	51%	73%	79%	77%	76%	77%	68%	78%	58%	60%	64%	63%	MSA Production Index
Ranking %	40	15	35	40	15	10	9	2	25	90	95	96	40	+\$158
BWT,400WT,600WT,SS,FAT,EMA,IMF,Genomics														

Purchaser: _____ Price: \$ _____



Underbelly is a Ledger son who offers thickness and depth of body. Appreciate the short gestation, above average EMA, high growth and scrotal size. From a highly regarded dam, who has produced 2 previous sons selling to a top of \$12,000 to Freeman Pastoral. **HETEROZYGOUS POLLED.**

Lot 14 REMOLEA UNDERBELLY U007 (S)

BORN: 26/07/2023 **MOLU**U007 **EYE PIGMENT:** 98/100

ALLENDALE YACKA (AI) (P)
ALLENDALE ANZAC E114 (PP)
ALLENDALE DAWN B22 (AI) (ET) (P)
Sire: WIRRUNA LEDGER L285 (AI) (PP)
GH ADAMS TARGET 5S (IMP CAN) (P)
WIRRUNA DOREEN G115 (AI) (P)
WIRRUNA DOREEN A37 (AI) (P)
OTAPAWA SPARK 3060 (IMP NZL) (AI) (ET) (P)
TREFOIL PARK BLAIR F35 (AI) (P)
TREFOIL PARK BLUSH C3 (AI) (P)
Dam: REMOLEA DAINTY M070 (P)
THE COTTAGE MURRAY A18 (P)
REMOLEA DAINTY F23 (P)
REMOLEA DAINTY A09 (P)

Genetic status:
POLL C-Heterozygous Polled
(HPc),IEF-HYF-DLF.

JUNE 2025 HEREFORD BREEDPLAN

	CEDir	CEDtrs	GL	BW	200G	400G	600G	Milk	SS	EMA	Rib	Rump	IMF	Sustainability Production Index
EBV	-0.7	+2.9	-2.8	+5.0	+46	+78	+103	+15	+4.2	+4.9	+1.5	+2.6	+0.7	+\$175
ACC	64%	56%	75%	80%	78%	77%	79%	70%	79%	59%	61%	65%	65%	MSA Production Index
Ranking %	75	65	20	70	5	5	10	70	3	35	25	15	55	+\$164
CE,BWT,200WT,400WT,600WT,SS,FAT,EMA,IMF,Genomics														

Purchaser: _____ Price: \$ _____



U160 is a Nockout son with muscle expression and a sire's outlook. Really admire the roundness and shape he has to offer whilst retaining calving ease and low birth weight. High milk, scrotal size and IMF a feature. Maternal brother (Remolea Rhinestone R037) sold in 2022 to P & M Bird. **HETEROZYGOUS POLLED.**

Lot 15 REMOLEA UNAWARE U160 (S)

BORN: 05/09/2023 **MOLU**U160 **EYE PIGMENT:** 100/100

WIRRUNA HARTWIG H297 (P)
WIRRUNA KALIMNA K326 (PP)
WIRRUNA CORA H303 (AI) (ET) (P)
Sire: YAVENVALE NOCKOUT N312 (AI) (PP)
MINLACOWIE GRIFFIN (PP)
YAVENVALE CORISANDE L385 (AI) (ET) (PP)
YAVENVALE CORISANDE H143 (AI) (P)
KOANUI ROCKET 0219 (IMP NZL) (P)
BOWEN ESPLANADE E332 (AI) (PP)
BOWEN ROLLINA B347 (P)
Dam: REMOLEA ALBANY LASS M040 (P)
YAVENVALE COMPASS C330 (P)
DUNOON ALBANY LASS F055 (P)
DUNOON ALBANY LASS Z264 (H)

Genetic status:
POLL C-Heterozygous Polled
(HPc),IEF-HYF-DLF.

JUNE 2025 HEREFORD BREEDPLAN

	CEDir	CEDtrs	GL	BW	200G	400G	600G	Milk	SS	EMA	Rib	Rump	IMF	Sustainability Production Index
EBV	+11.3	+3.4	-1.8	+1.1	+35	+63	+84	+28	+4.2	+4.2	+2.1	+2.8	+1.5	+\$202
ACC	63%	53%	75%	80%	78%	77%	79%	69%	79%	60%	62%	65%	65%	MSA Production Index
Ranking %	25	65	35	15	50	35	45	3	3	50	7	10	20	+\$196
BWT,200WT,400WT,600WT,SS,FAT,EMA,IMF,Genomics														

Purchaser: _____ Price: \$ _____



The first Shepherd son to be offered at Remolea. Really admire the weight for age, dark, soft and dark red coat and big red eyes. He features high growth EBVs, large scrotal size, top 2% carcase weight and MSA boosting carcase data. **HOMOZYGOUS POLLED.**

Lot 16 REMOLEA UPPERCLASS U139 (PP)

BORN: 02/09/2023 **MOLU**139 **EYE PIGMENT:** 100/100

ELITE TRUST K215 (AI) (S)
GLENTREVOR TRUST N909 (AI) (PP)
GLENTREVOR SIRIKIT J504 (AI) (P)
Sire: TOBRUK SHEPHERD S33 (AI) (ET) (PP)
ARDO HUSTLER 4110 (IMP NZL) (P)
TOBRUK ROSE J6 (ET) (PP)
PINE HILL MARITANA A619 (AI) (P)
WIRRUNA KALIMNA K326 (PP)
YAVENVALE NOCKOUT N312 (AI) (PP)
YAVENVALE CORISANDE L385 (AI) (ET) (PP)
Dam: REMOLEA DAINTY S020 (P)
ELITE 4110 F88 (AI) (S)
REMOLEA DAINTY P150 (P)
REMOLEA DAINTY J67 (P)

Genetic status:
POLL C-Homozygous Polled
(PPCc),IEF-HYF,DLF.

JUNE 2025 HEREFORD BREEDPLAN														Sustainability Production Index
	CEDir	CEDtrs	GL	BW	200G	400G	600G	Milk	SS	EMA	Rib	Rump	IMF	
EBV	-5.1	+5.3	-1.5	+4.2	+4.7	+7.4	+11.4	+19	+4.3	+4.5	+1.4	+1.5	+1.4	+S199
ACC	61%	50%	74%	79%	78%	77%	79%	67%	78%	59%	60%	64%	63%	MSA Production Index
Ranking %	85	50	40	60	4	9	3	40	3	45	25	40	20	+S182
BWT,200WT,400WT,600WT,SS,FAT,EMA,IMF,Genomics														

Purchaser: _____ Price: \$ _____



16

A Nockout son with short gestation and strong fertility traits featuring top 3% scrotal size and top 25% days to calving. He also features top 10% IMF. Full brother sold in 2023 to WR & ML Eising. HETEROZYGOUS POLLED.

Lot 17 REMOLEA ULTIMATE U019 (S)

BORN: 02/08/2023 **MOLU**019 **EYE PIGMENT:** 100/100

WIRRUNA HARTWIG H297 (P)
WIRRUNA KALIMNA K326 (PP)
WIRRUNA CORA H303 (AI) (ET) (P)
Sire: YAVENVALE NOCKOUT N312 (AI) (PP)
MINLACOWIE GRIFFIN (PP)
YAVENVALE CORISANDE L385 (AI) (ET) (PP)
YAVENVALE CORISANDE H143 (AI) (P)
ARDO HUSTLER 4110 (IMP NZL) (P)
ELITE 4110 F88 (AI) (S)
ELITE ORCHESTRA Y12 B2 (AI) (P)
Dam: REMOLEA ISOBEL P063 (P)
YAVENVALE FUTURA F228 (P)
REMOLEA ISOBEL J22 (P)
REMOLEA ISABEL F09 (P)

Genetic status:
POLL C-Heterozygous Polled
(HPPc),IEF-HYF,DLF.

JUNE 2025 HEREFORD BREEDPLAN														Sustainability Production Index
	CEDir	CEDtrs	GL	BW	200G	400G	600G	Milk	SS	EMA	Rib	Rump	IMF	
EBV	+4.4	+7.3	-3.2	+4.3	+38	+59	+81	+24	+4.2	+0.7	+0.2	-0.7	+1.7	+S164
ACC	63%	52%	75%	80%	78%	77%	79%	69%	79%	60%	62%	65%	65%	MSA Production Index
Ranking %	55	40	15	60	35	50	55	15	3	99	80	94	10	+S143
CE,BWT,200WT,400WT,600WT,SS,FAT,EMA,IMF,Genomics														

Purchaser: _____ Price: \$ _____



17

U151 is a Megatron son with style growth and phenotype. He also offers short gestation, high growth EBVs, above average scrotal size and IMF. **HOMOZYGOUS POLLED.**

Lot 18 REMOLEA UNFORGIVEN U151 (PP)

BORN: 04/09/2023 **MOLU**151 **EYE PIGMENT:** 100/100

CAPETHORNE HOT SHOT 03 22 (P)
MATARIKI HOLY - SMOKE (IMP NZL) (P)
MATARIKI GIRLIE 00323 (P)
Sire: CALLAWAY WRL HS MEGATRON M004 (AI) (TW) (PP)
NOROLLE NEW DIMENSION J270 (P)
KENROY LYDIA (AI) (P)
MARKOWEN LYDIA E61 (AI) (P)
YAMBRO CONRAD B88 (P)
RUSSLYNN JACK FLASH (P)
RUSSLYNN PURITY E33 (AI) (P)
Dam: REMOLEA MARJORIE P057 (P)
KROY PARK ZEST Z34 (P)
REMOLEA MARJORIE C59 (P)
REMOLEA MARJORIE Z107 (P)

Genetic status:
POLL C-Homozygous Polled
(PPCc),IEF-HYF,DLF.

JUNE 2025 HEREFORD BREEDPLAN														Sustainability Production Index
	CEDir	CEDtrs	GL	BW	200G	400G	600G	Milk	SS	EMA	Rib	Rump	IMF	
EBV	+5.3	-0.6	-3.8	+4.7	+39	+59	+86	+9	+3.1	+1.7	+0.8	+1.9	+1.2	+S118
ACC	58%	49%	69%	79%	76%	75%	77%	65%	78%	55%	57%	62%	60%	MSA Production Index
Ranking %	50	85	9	65	30	50	40	96	20	98	55	30	30	+S109
BWT,200WT,400WT,600WT,SS,FAT,EMA,IMF,Genomics														

Purchaser: _____ Price: \$ _____



18

A long and upstanding Fairfax son, with bone balance and sire appeal. He features high growth EBVs, above average EMA and IMF. **HOMOZYGOUS POLLED.**

Lot 19 REMOLEA ULSTER U117 (PP)

BORN: 26/08/2023 **MOLU117** **EYE PIGMENT:** 100/100

ALLENDALDE ANZAC E114 (PP)
WIRRUNA NIXON N168 (AI) (TW) (PP)
WIRRUNA DIDO H45 (AI) (PP)
Sire: TREFOIL PARK FAIRFAX S014 (AI) (PP)
YARRANDABBIE JINGLE J018 (AI) (PP)
TREFOIL PARK FANCY P004 (AI) (P)
TREFOIL PARK FANCY E24 (P)

DUNOON DIAMANTINA D651 (AI) (S)
BOWEN GEORGE G25 (P)
BOWEN RUTH Z324 (AI) (P)
Dam: REMOLEA GEM Q101 (P)
BOWEN ULTRA U40 (P)
REMOLEA GEM E44 (P)
REMOLEA GEM X36 (P)

Genetic status:
POLL C-Homozygous Polled
(PPCg)JEF-HYF-DLF

JUNE 2025 HEREFORD BREEDPLAN

	CEDir	CEDtrs	GL	BW	200G	400G	600G	Milk	SS	EMA	Rib	Rump	IMF	Sustainability Production Index
EBV	-21.0	+0.2	-2.7	+6.2	+4.4	+6.6	+9.5	+9	+1.2	+4.8	+1.0	+1.7	+1.0	+5103
ACC	55%	43%	70%	78%	75%	74%	75%	61%	75%	52%	54%	59%	57%	MSA Production Index
Ranking %	99	80	20	90	9	30	25	96	91	35	45	35	40	+592

BWT,200WT,400WT,600WT,SS,FAT,EMA,IMF,Genomics

Purchaser: _____ Price: \$ _____



A Ledger son with thickness, balance and performance. An outstanding data set combining low birth weight, explosive growth, top 1% scrotal size, top 3% carcase weight and high IMF. **HOMOZYGOUS POLLED.**

Lot 20 REMOLEA UNLIMITED U144 (PP)

BORN: 02/09/2023 **MOLU144** **EYE PIGMENT:** 100/100

ALLENDALDE YACKA (AI) (P)
ALLENDALDE ANZAC E114 (PP)
ALLENDALDE DAWN B22 (AI) (ET) (P)
Sire: WIRRUNA LEDGER L285 (AI) (PP)
GH ADAMS TARGET 5S (IMP CAN) (P)
WIRRUNA DOREEN G115 (AI) (P)
WIRRUNA DOREEN A37 (AI) (P)
MATARIKI HOLY - SMOKE (IMP NZL) (P)
WIRRUNA KANSAS K68 (AI) (P)
WIRRUNA VICTORIA H136 (AI) (P)

Dam: TERRANEIL MARY P63 (P)
GLEN GOULBURN BOSTON J81 (AI) (P)
TERRANEIL MARY M61 (P)
TERRANEIL MARY F51 (P)

Genetic status:
POLL C-Homozygous Polled
(PPCg)JEF-HYF-DLF

JUNE 2025 HEREFORD BREEDPLAN

	CEDir	CEDtrs	GL	BW	200G	400G	600G	Milk	SS	EMA	Rib	Rump	IMF	Sustainability Production Index
EBV	+6.0	+2.8	-0.6	+2.4	+4.8	+8.3	+10.9	+17	+5.7	+3.8	+0.1	+0.3	+1.2	+5206
ACC	62%	54%	74%	79%	77%	77%	78%	68%	78%	58%	60%	64%	63%	MSA Production Index
Ranking %	50	65	55	30	3	3	6	55	1	65	80	80	30	+5197

BWT,200WT,400WT,600WT,SS,FAT,EMA,IMF,Genomics

Purchaser: _____ Price: \$ _____



U183 features a sire's outlook, depth of body and softness. Uptake has a good spread of EBVs combining high calving ease, low birth weight, high growth, top 2% milk, high scrotal and high retail beef yield. **HOMOZYGOUS POLLED.**

Lot 21 REMOLEA UPTAKE U183 (S)

BORN: 18/09/2023 **MOLU183** **EYE PIGMENT:** 100/100

WIRRUNA HARTWIG H297 (P)
WIRRUNA KALIMNA K326 (PP)
WIRRUNA CORA H303 (AI) (ET) (P)
Sire: YAVENVALE NOCKOUT N312 (AI) (PP)
MINLACOWIE GRIFFIN (PP)
YAVENVALE CORISANDE L385 (AI) (ET) (PP)
YAVENVALE CORISANDE H143 (AI) (P)
KOANUI UNANIMOUS 3152 (IMP NZL) (PP)
YALGOO ZAC F083 (AI) (P)
YALGOO ZELDA B054 (P)

Dam: REMOLEA GEM K29 (P)
BOWEN ULTRA U40 (P)
REMOLEA GEM E44 (P)
REMOLEA GEM X36 (P)

Genetic status:
POLL C-Homozygous Polled
(PPCg)JEF-HYF-DLF

JUNE 2025 HEREFORD BREEDPLAN

	CEDir	CEDtrs	GL	BW	200G	400G	600G	Milk	SS	EMA	Rib	Rump	IMF	Sustainability Production Index
EBV	+9.2	+8.6	+0.1	+3.6	+4.2	+6.8	+9.9	+3.0	+3.3	+2.7	-0.5	-1.1	+0.6	+5174
ACC	63%	52%	75%	80%	78%	77%	79%	69%	79%	60%	62%	66%	65%	MSA Production Index
Ranking %	35	30	70	50	15	20	15	2	15	90	94	97	60	+5147

BWT,200WT,600WT,SS,FAT,EMA,IMF,Genomics

Purchaser: _____ Price: \$ _____



An attractive Megatron son featuring a dark, sleek skin and big red eyes. From a high milking Futura female who has been a consistent breeder within the Remolea herd. **HOMOZYGOUS POLLED.**

Lot 22 REMOLEA UNCANNY U050 (PP)

BORN: 11/08/2023 **MOLU050** **EYE PIGMENT:** 100/100

CAPETHORNE HOT SHOT 03 22 (P)
MATARIKI HOLY - SMOKE (IMP NZL) (P)
MATARIKI GIRLIE 00323 (P)
Sire: CALLAWAY WRL HS MEGATRON M004 (AI) (TW) (PP)
NOROLLE NEW DIMENSION J270 (P)
KENROY LYDIA (AI) (P)
MARKOWEN LYDIA E61 (AI) (P)
VALMA MERCHANT (AI) (P)
YAVENVALE FUTURA F228 (P)
YAVENVALE CORISANDE C043 (P)
Dam: REMOLEA KIMINO N042 (P)
BOWEN ESPLANADE E332 (AI) (PP)
REMOLEA KIMINO K82 (P)
REMOLEA KIMINO D92 (P)

Genetic status:
POLL C-Homozygous Polled
(PcPc),IEF-HYF-DLF,

JUNE 2025 HEREFORD BREEDPLAN

	CEDir	CEDtrs	GL	BW	200G	400G	600G	Milk	SS	EMA	Rib	Rump	IMF	Sustainability Production Index
EBV	+6.1	-4.2	-7.2	+4.0	+46	+71	+97	+18	+3.8	+2.3	-0.2	+0.1	+1.0	+\$142
ACC	59%	49%	70%	79%	77%	76%	78%	66%	78%	56%	58%	63%	61%	MSA Production Index
Ranking %	45	94	1	55	5	15	20	50	6	93	90	85	40	+\$129

CE,BWT,200WT,400WT,600WT,SS,FAT,EMA,IMF,Genomics

Purchaser: _____ Price: \$ _____



An easy doing Rainmaker son. Really admire the softness and balance he has to offer. Appreciate the short gestation above average growth, and high fats EBVs. **HOMOZYGOUS POLLED**

Lot 23 REMOLEA UNO U092 (PP)

BORN: 19/08/2023 **MOLU092** **EYE PIGMENT:** 100/100

MINLACOWIE GRIFFIN (PP)
YAVENVALE KINGPIN K317 (PP)
YAVENVALE TREASURE D403 (P)
Sire: YAVENVALE RAINMAKER R464 (AI) (PP)
YAVENVALE GUARDSMAN G471 (AI) (P)
YAVENVALE JULIET M535 (P)
YAVENVALE JULIET J031 (P)
GRASSMERE SPARK 555 (IMP NZL) (PP)
BOWEN SPARK L76 (AI) (PP)
BOWEN LEONORA E117 (P)
Dam: REMOLEA NEEDFULL P089 (P)
YALGOO ZAC F083 (AI) (P)
REMOLEA NEEDFULL K124 (P)
REMOLEA NEEDFULL E133 (P)

Genetic status:
POLL C-Homozygous Polled
(PcPc),IEF-HYF-DLF,

JUNE 2025 HEREFORD BREEDPLAN

	CEDir	CEDtrs	GL	BW	200G	400G	600G	Milk	SS	EMA	Rib	Rump	IMF	Sustainability Production Index
EBV	+2.2	+3.9	-5.1	+4.9	+38	+63	+97	+21	+1.5	+2.9	+2.2	+2.7	+1.5	+\$144
ACC	55%	41%	73%	79%	76%	75%	77%	61%	76%	52%	55%	59%	58%	MSA Production Index
Ranking %	60	60	4	70	35	35	20	30	85	85	6	15	20	+\$124

CE,BWT,200WT,400WT,600WT,SS,FAT,EMA,IMF,Genomics

Purchaser: _____ Price: \$ _____



A Nipper son with length, bone and balance. He offers above average calving ease, short gestation, moderate birth weight, high scrotal size, above average EMA and top 20% retail beef yield. **HOMOZYGOUS POLLED.**

Lot 24 REMOLEA UNIVERSITY U147 (PP)

BORN: 02/09/2023 **MOLU147** **EYE PIGMENT:** 100/100

SOUTH BUKALONG WALLACE 2 (P)
DALKEITH L012 (AI) (ET) (P)
MARKOWEN LADYBIRD A18 (AI) (P)
Sire: DALKEITH NIPPER N082 (P)
MATARIKI 100380 (IMP NZL) (P)
DALKEITH MINERVA LASS L175 (AI) (P)
DALKEITH MINERVA LASS 99 ET1 (AI) (ET) (S)
KOANUI ROCKET 0219 (IMP NZL) (P)
BOWEN ESPLANADE E332 (AI) (PP)
BOWEN ROLLINA B347 (P)
Dam: REMOLEA MINUETTE L055 (P)
BOWEN ULTRA U40 (P)
REMOLEA MINUETTE E59 (P)
REMOLEA MINUETTE X102 (P)

Genetic status:
POLL C-Homozygous Polled
(PcPc),IEF-HYF-DLF,

JUNE 2025 HEREFORD BREEDPLAN

	CEDir	CEDtrs	GL	BW	200G	400G	600G	Milk	SS	EMA	Rib	Rump	IMF	Sustainability Production Index
EBV	+10.2	+11.0	-1.7	+3.9	+34	+55	+83	+16	+3.2	+4.7	+0.2	+0.3	+0.7	+\$146
ACC	59%	47%	73%	79%	77%	76%	78%	65%	77%	55%	58%	62%	61%	MSA Production Index
Ranking %	30	20	35	55	55	65	50	65	15	40	80	80	55	+\$138

BWT,200WT,400WT,600WT,SS,FAT,EMA,IMF,Genomics

Purchaser: _____ Price: \$ _____



U212 offers a lot of punch. He is strong topped and has great weight for age. The Elite 4110 F88 daughters are some of the best females in the herd. He features top 20% 200-day weight and IMF. HETEROZYGOUS POLLED.

Lot 25 REMOLEA UNITED U212 (S)

BORN: 18/10/2023 **MOLU212** **EYE PIGMENT:** 100/100

WIRRUNA HARTWIG H297 (P)
WIRRUNA KALIMNA K326 (P)
WIRRUNA CORA H303 (AI) (ET) (P)
Sire: YAVENVALE NOCKOUT N312 (AI) (PP)
MINLACOWIE GRIFFIN (PP)
YAVENVALE CORISANDE L385 (AI) (ET) (PP)
YAVENVALE CORISANDE H143 (AI) (P)
ARDO HUSTLER 4110 (IMP NZL) (P)
ELITE 4110 F88 (AI) (S)
ELITE ORCHESTRA Y12 B2 (AI) (P)
Dam: REMOLEA NEEDFULL R011 (P)
YALGOO ZAC F083 (AI) (P)
REMOLEA NEEDFULL J59 (P)
REMOLEA NEEDFULL E14 (P)

Genetic status:
POLL C-Heterozygous Polled
(Hpc),IEF,HYF,DLF,

JUNE 2025 HEREFORD BREEDPLAN

	CEDir	CEDtrs	GL	BW	200G	400G	600G	Milk	SS	EMA	Rib	Rump	IMF	Sustainability Production Index
EBV	+5.3	+7.1	-1.7	+4.7	+41	+65	+84	+19	+2.2	+3.7	+1.0	+1.5	+1.4	+169
ACC	64%	53%	75%	80%	78%	78%	79%	69%	79%	61%	63%	66%	65%	MSA Production Index
Ranking %	50	40	35	65	20	30	45	40	55	65	45	40	20	+161

BWT,200WT,400WT,600WT,SS,FAT,EMA,IMF,Genomics

Purchaser: _____ Price: \$ _____



A ledger son with thickness and depth of body. From an exceptional matron producing several daughters retained in the herd as well as Remolea Logan L042 who sold to Tahlan and Lachdale Poll Herefords. **HOMOZYGOUS POLLED**

Lot 26 REMOLEA UNDERDOG U068 (PP)

BORN: 12/08/2023 **MOLU068** **EYE PIGMENT:** 100/100

ALLENDALDE YACKA (AI) (P)
ALLENDALDE ANZAC E114 (PP)
ALLENDALDE DAWN B22 (AI) (ET) (P)
Sire: WIRRUNA LEDGER L285 (AI) (PP)
GH ADAMS TARGET 5S (IMP CAN) (P)
WIRRUNA DOREEN G115 (AI) (P)
WIRRUNA DOREEN A37 (AI) (P)
KOANUI ROCKET 0219 (IMP NZL) (P)
BOWEN ESPLANADE E332 (AI) (PP)
BOWEN ROLLINA B347 (P)
Dam: REMOLEA GEM H06 (P)
BOWEN ULTRA U40 (P)
REMOLEA GEM E44 (P)
REMOLEA GEM X36 (P)

Genetic status:
POLL C-Homozygous Polled
(PcP),IEF,HYF,DLF,

JUNE 2025 HEREFORD BREEDPLAN

	CEDir	CEDtrs	GL	BW	200G	400G	600G	Milk	SS	EMA	Rib	Rump	IMF	Sustainability Production Index
EBV	-2.9	-0.9	-0.4	+4.4	+42	+70	+85	+20	+3.5	+3.6	-0.2	+0.0	+0.9	+156
ACC	65%	57%	76%	81%	79%	78%	80%	71%	80%	61%	62%	66%	66%	MSA Production Index
Ranking %	80	85	60	60	15	20	45	35	9	70	90	85	45	+142

CE,BWT,200WT,400WT,600WT,SS,FAT,EMA,IMF,Genomics

Purchaser: _____ Price: \$ _____



A soft fleshy Rainmaker son with a good maturity pattern. Good skin and hair type coupled with an exceptional data spread combining high calving ease, super short gestation, low birth weight and explosive growth and high fats EBVs. **HOMOZYGOUS POLLED**

Lot 27 REMOLEA UNFORSEEN U229 (PP)

BORN: 18/11/2023 **MOLU229** **EYE PIGMENT:** 100/100

MINLACOWIE GRIFFIN (PP)
YAVENVALE KINGPIN K317 (PP)
YAVENVALE TREASURE D403 (P)
Sire: YAVENVALE RAINMAKER R464 (AI) (PP)
YAVENVALE GUARDSMAN G471 (AI) (P)
YAVENVALE JULIET M535 (P)
YAVENVALE JULIET J031 (P)
KARINA CHERRY Z8 (PP)
TYCOLAH MCCOY J122 (P)
TYCOLAH COUNTESS F33 (P)
Dam: REMOLEA MINUETTE Q053 (P)
BOWEN ESPLANADE E332 (AI) (PP)
REMOLEA MINUETTE L055 (P)
REMOLEA MINUETTE E59 (P)

Genetic status:
POLL C-Homozygous Polled
(PcP),IEF,HYF,DLF,

JUNE 2025 HEREFORD BREEDPLAN

	CEDir	CEDtrs	GL	BW	200G	400G	600G	Milk	SS	EMA	Rib	Rump	IMF	Sustainability Production Index
EBV	+12.5	+7.4	-4.6	+3.3	+38	+76	+106	+18	+2.8	+4.2	+1.8	+2.9	+1.0	+185
ACC	56%	42%	74%	79%	77%	75%	76%	61%	76%	53%	55%	60%	59%	MSA Production Index
Ranking %	25	35	5	45	35	7	8	50	30	50	15	9	40	+175

BWT,200WT,400WT,600WT,SS,FAT,EMA,IMF,Genomics

Purchaser: _____ Price: \$ _____



A Ledger son with length balance and a well hooded eye. From a great cow family with longevity and consistency. He offers top 5% 200- and 400-day weight, high scrotal size and retail beef yield. **HOMOZYGOUS POLLED.**

Lot 28 REMOLEA UMBER U012 (PP)

BORN: 28/07/2023 **MOLU012** **EYE PIGMENT:** 100/98

ALLENDALDE YACKA (AI) (P)
ALLENDALDE ANZAC E114 (PP)
ALLENDALDE DAWN B22 (AI) (ET) (P)
Sire: WIRRUNA LEDGER L285 (AI) (PP)
GH ADAMS TARGET 55 (IMP CAN) (P)
WIRRUNA DOREEN G115 (AI) (P)
WIRRUNA DOREEN A37 (AI) (P)

OMEQ TRUMPER W29 (P)
THE COTTAGE MURRAY A18 (P)
THE COTTAGE MARITANA U17 (P)
Dam: REMOLEA JANEJ02 (P)
BOWEN ULTRA U40 (P)
REMOLEA JANE Z57 (P)
REMOLEA JANE U104 (P)

Genetic status:
POLL C-Homozygous Polled
(PPCc),IEF-HYF,DLF.

JUNE 2025 HEREFORD BREEDPLAN

	CEDir	CEDtrs	GL	BW	200G	400G	600G	Milk	SS	EMA	Rib	Rump	IMF	Sustainability Production Index
EBV	-9.3	+0.0	-2.5	+5.8	+4.7	+7.8	+9.8	+1.6	+4.1	+3.7	-0.5	+0.1	-0.7	+\$127
ACC	64%	56%	74%	80%	78%	77%	78%	70%	78%	60%	62%	65%	65%	MSA Production Index
Ranking %	92	80	20	85	4	5	20	65	4	65	94	85	99	+\$107

CE,BWT,400WT,600WT,SS,FAT,EMA,IMF,Genomics

Purchaser: _____ Price: \$ _____



A Nipper son with softness neck extension and balance. Suitable for heifer joining combining high calving ease short gestation and low birth weight. U162 also offers high EMA and IMF, carcase quantity and quality. **HETEROZYGOUS POLLED.**

Lot 29 REMOLEA UNDERCURRENT U162 (P)

BORN: 06/09/2023 **MOLU162** **EYE PIGMENT:** 100/100

SOUTH BUKALONG WALLACE 2 (P)
DALKEITH L012 (AI) (ET) (P)
MARKOWEN LADYBIRD A18 (AI) (P)
Sire: DALKEITH NIPPER N082 (P)
MATARIKI 100380 (IMP NZL) (P)
DALKEITH MINERVA LASS L175 (AI) (P)
DALKEITH MINERVA LASS 99 ET1 (AI) (ET) (S)

KOANUI ROCKET 0219 (IMP NZL) (P)
BOWEN ESPLANADE E332 (AI) (PP)
BOWEN ROLLINA B347 (P)
Dam: REMOLEA LOVELY N074 (P)
EVESHAM BOMBER B52 (S)
REMOLEA LOVELY G34 (P)
REMOLEA LOVELY A143 (P)

Genetic status:
POLL C-Heterozygous Polled
(HPPc),IEF-HYF,DLF.

JUNE 2025 HEREFORD BREEDPLAN

	CEDir	CEDtrs	GL	BW	200G	400G	600G	Milk	SS	EMA	Rib	Rump	IMF	Sustainability Production Index
EBV	+12.5	+13.2	-4.1	+3.6	+3.8	+6.1	+9.1	+1.3	+3.7	+5.9	-0.1	-0.2	+1.9	+\$187
ACC	58%	47%	73%	79%	77%	76%	77%	64%	77%	54%	57%	61%	60%	MSA Production Index
Ranking %	25	7	7	50	35	45	30	85	7	15	90	90	7	+\$184

BWT,200WT,400WT,600WT,SS,FAT,EMA,IMF,Genomics

Purchaser: _____ Price: \$ _____



An early maturing, heifers first calf, with thickness in spades. An outstanding heifer bull prospect, combining high calving ease and super low birth weight. Strong fertility traits, featuring high scrotal size and shorter days to calving EBV. **HOMOZYGOUS POLLED**

Lot 30 REMOLEA UNRIVALLED U049 (PP)

BORN: 10/08/2023 **MOLU049** **EYE PIGMENT:** 100/100

ELITE TRUST K215 (AI) (S)
GLENTREVOR TRUST N909 (AI) (PP)
GLENTREVOR SIRIKIT J504 (AI) (P)
Sire: TOBRUK SHEPHERD S33 (AI) (ET) (PP)
ARDO HUSTLER 4110 (IMP NZL) (P)
TOBRUK ROSE J6 (ET) (PP)

PINE HILL MARITANA A619 (AI) (P)
YAMBRO CONRAD B88 (P)
RUSSLYNN JACK FLASH (P)
RUSSLYNN PURITY E33 (AI) (P)
Dam: REMOLEA LADYBIRD S109 (P)
TREFOIL PARK BLAIR F35 (AI) (P)
REMOLEA LADYBIRD K78 (P)
REMOLEA LADYBIRD B86 (P)

Genetic status:
POLL C-Homozygous Polled
(PPCc),IEF-HYF,DLF.

JUNE 2025 HEREFORD BREEDPLAN

	CEDir	CEDtrs	GL	BW	200G	400G	600G	Milk	SS	EMA	Rib	Rump	IMF	Sustainability Production Index
EBV	+11.0	+13.1	-2.3	+0.3	+3.3	+5.4	+7.9	+1.9	+3.8	+2.7	+1.0	+1.6	+1.8	+\$183
ACC	58%	47%	72%	78%	77%	76%	77%	64%	77%	55%	57%	61%	60%	MSA Production Index
Ranking %	30	8	25	7	60	70	60	40	6	90	45	40	9	+\$179

CE,BWT,200WT,400WT,600WT,SS,FAT,EMA,IMF,Genomics

Purchaser: _____ Price: \$ _____



An eye catching Nockout son with length of body and phenotypically sound. Suitable for heifers combining neck extension, smooth laid in shoulder high calving ease, short gestation length and low birth weight. Strong carcass EBVs combine high fats and top 9% IMF.

HOMOZYGOUS POLLED

Lot 31 REMOLEA ULVERSTONE U158 (PP)

BORN: 05/09/2023 **MOLU158** **EYE PIGMENT:** 100/100

WIRRUNA HARTWIG H297 (P)
WIRRUNA KALIMNA K326 (PP)
WIRRUNA CORA H303 (AI) (ET) (P)
Sire: YAVENVALE NOCKOUT N312 (AI) (PP)
MINLACOWIE GRIFFIN (PP)
YAVENVALE CORISANDE L385 (AI) (ET) (PP)
YAVENVALE CORISANDE H143 (AI) (P)
MATARIKI HOLY - SMOKE (IMP NZL) (P)
CALLAWAY WRL HS MEGATRON M004 (AI) (TW) (PP)
KENROY LYDIA (AI) (P)
Dam: REMOLEA MINUETTE R094 (P)
BOWEN ESPLANADE E332 (AI) (PP)
REMOLEA MINUETTE K28 (P)
REMOLEA MINUETTE E59 (P)

Genetic status:
POLL C-Homozygous Polled
(PPCc)IEF-HYF-DLF

JUNE 2025 HEREFORD BREEDPLAN

	CEDir	CEDtrs	GL	BW	200G	400G	600G	Milk	SS	EMA	Rib	Rump	IMF	Sustainability Production Index
EBV	+13.0	+9.4	-2.8	+0.9	+34	+58	+84	+25	+2.9	+3.5	+2.1	+3.0	+2.0	+5181
ACC	62%	52%	74%	79%	78%	77%	78%	68%	78%	59%	61%	64%	64%	MSA Production Index
Ranking %	20	25	20	15	55	55	45	8	25	70	7	8	6	+5177

BWT,200WT,400WT,600WT,SS,FAT,EMA,IMF,Genomics

Purchaser: _____ Price: \$ _____



U157 is another Nockout son well suited for heifer joining. He features high calving ease and low birth weight. From a classy young Elite F88 daughter who is regarded highly in the herd. HETEROZYGOUS POLLED.

Lot 32 REMOLEA ULRICH U157 (S)

BORN: 05/09/2023 **MOLU157** **EYE PIGMENT:** 100/100

WIRRUNA HARTWIG H297 (P)
WIRRUNA KALIMNA K326 (PP)
WIRRUNA CORA H303 (AI) (ET) (P)
Sire: YAVENVALE NOCKOUT N312 (AI) (PP)
MINLACOWIE GRIFFIN (PP)
YAVENVALE CORISANDE L385 (AI) (ET) (PP)
YAVENVALE CORISANDE H143 (AI) (P)
ARDO HUSTLER 4110 (IMP NZL) (P)
ELITE 4110 F88 (AI) (S)
ELITE ORCHESTRA Y12 B2 (AI) (P)
Dam: REMOLEA MARJORIE Q077 (P)
BOWEN ESPLANADE E332 (AI) (PP)
REMOLEA MARJORIE J66 (P)
REMOLEA MARJORIE E29 (P)

Genetic status:
POLL C-Heterozygous Polled
(HPc)IEF-HYF-DLF

JUNE 2025 HEREFORD BREEDPLAN

	CEDir	CEDtrs	GL	BW	200G	400G	600G	Milk	SS	EMA	Rib	Rump	IMF	Sustainability Production Index
EBV	+12.5	+12.4	-1.4	+2.4	+41	+67	+88	+21	+2.2	+0.5	+0.4	+0.6	+1.0	+5187
ACC	63%	53%	75%	80%	78%	77%	79%	69%	79%	61%	62%	65%	65%	MSA Production Index
Ranking %	25	10	40	30	20	25	35	30	55	99	70	70	40	+5172

BWT,200WT,400WT,600WT,SS,FAT,EMA,IMF,Genomics

Purchaser: _____ Price: \$ _____



A Nockout son featuring thickness and roundness of the hindquarter. High milk EBV ranking in the top 8% of the breed. He also offers calving ease and below average gestation length and birth weight.

HOMOZYGOUS POLLED

Lot 33 REMOLEA UNDERSTATE U077 (PP)

BORN: 14/08/2023 **MOLU077** **EYE PIGMENT:** 100/100

WIRRUNA HARTWIG H297 (P)
WIRRUNA KALIMNA K326 (PP)
WIRRUNA CORA H303 (AI) (ET) (P)
Sire: YAVENVALE NOCKOUT N312 (AI) (PP)
MINLACOWIE GRIFFIN (PP)
YAVENVALE CORISANDE L385 (AI) (ET) (PP)
YAVENVALE CORISANDE H143 (AI) (P)
ARDO HUSTLER 4110 (IMP NZL) (P)
ELITE 4110 F88 (AI) (S)
ELITE ORCHESTRA Y12 B2 (AI) (P)
Dam: REMOLEA JANE R013 (P)
YALGOO ZAC F083 (AI) (P)
REMOLEA JANE L44 (P)
REMOLEA JANE F19 (P)

Genetic status:
POLL C-Homozygous Polled
(PPCc)IEF-HYF-DLF

JUNE 2025 HEREFORD BREEDPLAN

	CEDir	CEDtrs	GL	BW	200G	400G	600G	Milk	SS	EMA	Rib	Rump	IMF	Sustainability Production Index
EBV	+9.7	+5.0	-1.5	+3.0	+36	+59	+82	+25	+3.0	+1.2	-0.3	-1.1	-0.2	+5154
ACC	62%	53%	74%	79%	77%	77%	78%	68%	78%	59%	61%	65%	64%	MSA Production Index
Ranking %	35	55	40	40	45	50	50	8	25	99	91	97	94	+5131

CE,BWT,200WT,400WT,600WT,SS,FAT,EMA,IMF,Genomics

Purchaser: _____ Price: \$ _____



A heifers first calf, oozing softness and do ability. He offers a great spread of data combining low birth weight, high growth, milk, scrotal size and IMF. HOMOZOUS POLLED

Lot 34 REMOLEA UMBERCOLLIE U177 (PP)

BORN: 15/09/2023 MOLU177 EYE PIGMENT: 100/100

ELITE TRUST K215 (AI) (S)
GLENTREVOR TRUST N909 (AI) (PP)
GLENTREVOR SIRIKIT J504 (AI) (P)
Sire: TOBRUK SHEPHERD S33 (AI) (ET) (PP)
ARDO HUSTLER 4110 (IMP NZL) (P)
TOBRUK ROSE J6 (ET) (PP)
PINE HILL MARITANA A619 (AI) (P)
WIRRUNA MATTY M288 (AI) (ET) (PP)
TOBRUK QUINN Q006 (AI) (PP)
TOBRUK DAISY N12 (PP)
Dam: REMOLEA MARJORIE S073 (P)
RUSSLYNN JACK FLASH (P)
REMOLEA MARJORIE Q083 (P)
REMOLEA MARJORIE K153 (P)

Genetic status:
POLL C-Homozygous Polled
(PcPc),IEF,HYF,DLF,

JUNE 2025 HEREFORD BREEDPLAN														Sustainability Production Index
	CEDir	CEDtrs	GL	BW	200G	400G	600G	Milk	SS	EMA	Rib	Rump	IMF	
EBV	+0.4	+10.8	-0.5	+2.7	+39	+63	+95	+22	+4.4	+4.0	+0.9	+1.3	+1.7	+183
ACC	60%	48%	73%	79%	77%	76%	78%	66%	78%	57%	58%	62%	62%	MSA Production Index
Ranking %	70	20	60	35	30	35	25	20	2	60	50	50	10	+170
BWT,200WT,600WT,SS,FAT,EMA,IMF,Genomics														

Purchaser: _____ Price: \$ _____



A Shepherd son with muscle content and good skin and hair type. Outstanding set of EBVs combining low birth, curve bending growth, strong fertility traits and profitable carcass data. HOMOZYGOUS POLLED

Lot 35 REMOLEA UNLOCKED U058 (PP)

BORN: 13/08/2023 MOLU058 EYE PIGMENT: 100/100

ELITE TRUST K215 (AI) (S)
GLENTREVOR TRUST N909 (AI) (PP)
GLENTREVOR SIRIKIT J504 (AI) (P)
Sire: TOBRUK SHEPHERD S33 (AI) (ET) (PP)
ARDO HUSTLER 4110 (IMP NZL) (P)
TOBRUK ROSE J6 (ET) (PP)
PINE HILL MARITANA A619 (AI) (P)
DALKEITH L012 (AI) (ET) (P)
DALKEITH NIPPER N082 (P)
DALKEITH MINERVA LASS L175 (AI) (P)
Dam: REMOLEA MINUETTE S106 (P)
BOWEN ESPLANADE E332 (AI) (PP)
REMOLEA MINUETTE L055 (P)
REMOLEA MINUETTE E59 (P)

Genetic status:
POLL C-Homozygous Polled
(PcPc),IEF,HYF,DLF,

JUNE 2025 HEREFORD BREEDPLAN														Sustainability Production Index
	CEDir	CEDtrs	GL	BW	200G	400G	600G	Milk	SS	EMA	Rib	Rump	IMF	
EBV	+8.9	+10.7	-1.8	+3.2	+38	+69	+105	+20	+4.7	+4.8	+1.4	+2.0	+1.0	+199
ACC	59%	47%	72%	78%	77%	76%	77%	64%	77%	55%	57%	61%	61%	MSA Production Index
Ranking %	35	20	35	40	35	20	8	35	1	35	25	30	40	+188
CE,BWT,200WT,400WT,600WT,SS,FAT,EMA,IMF,Genomics														

Purchaser: _____ Price: \$ _____



Another heifer's first calf and a cracking young sire with muscle content and sire appeal. Appreciate the high growth EBVs including top 5% 600 day weight, high scrotal size and outstanding carcass merit, featuring top 4% EMA, top 15% retail beef yield and top 20% IMF. HOMOZYGOUS POLLED

Lot 36 REMOLEA UNISON U025 (PP)

BORN: 05/08/2023 MOLU025 EYE PIGMENT: 100/100

ELITE TRUST K215 (AI) (S)
GLENTREVOR TRUST N909 (AI) (PP)
GLENTREVOR SIRIKIT J504 (AI) (P)
Sire: TOBRUK SHEPHERD S33 (AI) (ET) (PP)
ARDO HUSTLER 4110 (IMP NZL) (P)
TOBRUK ROSE J6 (ET) (PP)
PINE HILL MARITANA A619 (AI) (P)
ALLENDAL ANZAC E114 (PP)
WIRRUNA LEDGER L285 (AI) (PP)
WIRRUNA DOREEN G115 (AI) (P)
Dam: REMOLEA DOLORES S012 (P)
GLEN GOULBURN HARICOT E71 (PP)
TERRANEIL DOLORES N57 (P)
TERRANEIL DOLORES G41 (AI) (P)

Genetic status:
POLL C-Homozygous Polled
(PcPc),IEF,HYF,DLF,

JUNE 2025 HEREFORD BREEDPLAN														Sustainability Production Index
	CEDir	CEDtrs	GL	BW	200G	400G	600G	Milk	SS	EMA	Rib	Rump	IMF	
EBV	-7.2	+0.3	-3.6	+5.5	+43	+77	+110	+13	+3.2	+7.4	+0.7	+1.2	+1.5	+168
ACC	60%	49%	72%	78%	76%	75%	77%	64%	77%	55%	57%	61%	61%	MSA Production Index
Ranking %	90	80	10	80	15	6	5	85	15	4	60	50	20	+155
CE,BWT,200WT,400WT,600WT,SS,FAT,EMA,IMF,Genomics														

Purchaser: _____ Price: \$ _____



A fine coated Rainmaker son, with easy doing attributes. A top-quality heifer joining option, featuring calving ease, super short gestation and low birth weight. High fats ranking in the top 6%. From a top producing female who has sold 3 previous sons to a top of \$14,000 (including Remolea Quad Q050 to Glentown Grazing). **HOMOZYGOUS POLLED**

Lot 37 REMOLEA UNPACK U034 (PP)

BORN: 06/08/2023 **MOLU034** **EYE PIGMENT:** 100/100

MINLACOWIE GRIFFIN (PP)
YAVENVALE KINGPIN K317 (PP)
YAVENVALE TREASURE D403 (P)
Sire: YAVENVALE RAINMAKER R464 (AI) (PP)
YAVENVALE GUARDSMAN G471 (AI) (P)
YAVENVALE JULIET M535 (P)
YAVENVALE JULIET J031 (P)
YAMBRO CONRAD B88 (P)
RUSSLYNN JACK FLASH (P)
RUSSLYNN PURITY E33 (AI) (P)
Dam: REMOLEA KIMINO M110 (P)
EVESHAM BOMBER B52 (S)
REMOLEA KIMINO J31 (P)
REMOLEA KIMINO E53 (P)

Genetic status:
POLL C-Homozygous Polled
(PPG),IEF-HYF-DLF.

JUNE 2025 HEREFORD BREEDPLAN														Sustainability Production Index
	CEDir	CEDtrs	GL	BW	200G	400G	600G	Milk	SS	EMA	Rib	Rump	IMF	
EBV	+12.7	+10.7	-6.6	+2.3	+29	+52	+81	+13	+1.6	+2.1	+1.9	+3.2	+1.0	+171
ACC	56%	42%	74%	79%	77%	76%	77%	62%	77%	53%	56%	60%	59%	MSA Production Index
Ranking %	20	20	2	30	80	75	55	85	80	95	15	6	40	+168
CE,BWT,200WT,400WT,600WT,SS,FAT,EMA,IMF,Genomics														

Purchaser: _____ Price: \$ _____



U184 is another Shepherd son, with dimension and big red well hooded eyes. He features above average growth, high scrotal size, with carcase quantity and quality. Top 15% EMA and top 20% IMF. **HOMOZYGOUS POLLED**

Lot 38 REMOLEA UPWARD U184 (PP)

BORN: 21/09/2023 **MOLU184** **EYE PIGMENT:** 100/100

ELITE TRUST K215 (AI) (S)
GLENTREVOR TRUST N909 (AI) (PP)
GLENTREVOR SIRIKIT J504 (AI) (P)
Sire: TOBRUK SHEPHERD S33 (AI) (ET) (PP)
ARDO HUSTLER 4110 (IMP NZL) (P)
TOBRUK ROSE J6 (ET) (PP)
PINE HILL MARITANA A619 (AI) (P)
DALKEITH L012 (AI) (ET) (P)
DALKEITH NIPPER N082 (P)
DALKEITH MINERVA LASS L175 (AI) (P)
Dam: REMOLEA FAVOURITE S091 (P)
YAVENVALE FUTURA F228 (P)
REMOLEA FAVOURITE K49 (P)
REMOLEA FAVOURITE F100 (P)

Genetic status:
POLL C-Homozygous Polled
(PPG),IEF-HYF-DLF.

JUNE 2025 HEREFORD BREEDPLAN														Sustainability Production Index
	CEDir	CEDtrs	GL	BW	200G	400G	600G	Milk	SS	EMA	Rib	Rump	IMF	
EBV	-4.8	+12.6	-1.4	+4.9	+38	+58	+87	+14	+4.1	+5.9	+0.7	+0.5	+1.4	+152
ACC	57%	45%	72%	78%	76%	75%	77%	63%	76%	54%	56%	60%	60%	MSA Production Index
Ranking %	85	10	40	70	35	55	40	80	4	15	60	75	20	+143
BWT,200WT,400WT,600WT,SS,FAT,EMA,IMF,Genomics														

Purchaser: _____ Price: \$ _____



A Nipper son with a sires head, sleek hair type featuring length of body and depth of hindquarter. He attributes above average growth, retail beef yield and top 30% IMF. **HETEROZYGOUS POLLED.**

Lot 39 REMOLEA UTMOST U179 (S)

BORN: 17/09/2023 **MOLU179** **EYE PIGMENT:** 100/100

SOUTH BUKALONG WALLACE 2 (P)
DALKEITH L012 (AI) (ET) (P)
MARKOWEN LADYBIRD A18 (AI) (P)
Sire: DALKEITH NIPPER N082 (P)
MATARIKI 100380 (IMP NZL) (P)
DALKEITH MINERVA LASS L175 (AI) (P)
DALKEITH MINERVA LASS 99 ET1 (AI) (ET) (S)
MATARIKI HOLY - SMOKE (IMP NZL) (P)
CALLAWAY WRL HS MEGATRON M004 (AI) (TW) (PP)
KENROY LYDIA (AI) (P)
Dam: REMOLEA GEM P015 (P)
BOWEN ESPLANADE E332 (AI) (PP)
REMOLEA GEM L016 (P)
REMOLEA GEM D88 (P)

Genetic status:
POLL C-Heterozygous Polled
(HPG),IEF-HYF-DLF.

JUNE 2025 HEREFORD BREEDPLAN														Sustainability Production Index
	CEDir	CEDtrs	GL	BW	200G	400G	600G	Milk	SS	EMA	Rib	Rump	IMF	
EBV	+3.0	+8.0	-1.4	+5.1	+39	+60	+87	+14	+2.0	+4.3	-0.1	+0.2	+1.2	+136
ACC	57%	46%	72%	79%	76%	75%	77%	63%	76%	53%	56%	61%	59%	MSA Production Index
Ranking %	60	35	40	75	30	45	40	80	65	50	90	80	30	+127
BWT,200WT,400WT,600WT,SS,FAT,EMA,IMF,Genomics														

Purchaser: _____ Price: \$ _____



A later maturing
Fairfax son featuring
length, bone and neck
extension. Unveiling
provides high growth
EBVs, top 3% scrotal
size and above average
carcase weight from a
moderate birth weight.
HOMOZYGOUS POLLED.

Lot 40 REMOLEA UNVEILING U198 (PP)

BORN: 05/10/2023 **MOLU198** **EYE PIGMENT:** 100/100

ALLEDALE ANZAC E114 (PP)
WIRRUNA NIXON N168 (AI) (TW) (PP)
WIRRUNA DIDO H45 (AI) (PP)
Sire: TREFOIL PARK FAIRFAX S014 (AI) (PP)
YARRANDABBIE JINGLE J018 (AI) (PP)
TREFOIL PARK FANCY P004 (AI) (P)
TREFOIL PARK FANCY E24 (P)
MATARIKI HOLY - SMOKE (IMP NZL) (P)
CALLAWAY WRL HS MEGATRON M004 (AI) (TW) (PP)
KENROY LYDIA (AI) (P)
Dam: REMOLEA JANE Q033 (P)
RUSSLYNN JACK FLASH (P)
REMOLEA JANE M022 (P)
REMOLEA JANE J02 (P)

Genetic status:
POLL C-Homozygous Polled
(PPcG)JEF-HYF-DLF

JUNE 2025 HEREFORD BREEDPLAN														Sustainability Production Index
	CEDir	CEDtrs	GL	BW	200G	400G	600G	Milk	SS	EMA	Rib	Rump	IMF	
EBV	+1.3	+10.2	-1.2	+4.6	+38	+65	+93	+17	+4.2	+2.5	+0.2	+0.4	+0.8	+149
ACC	54%	43%	69%	77%	74%	73%	74%	60%	75%	50%	54%	58%	57%	MSA Production Index
Ranking %	65	20	45	65	35	30	25	55	3	90	80	75	50	+130
BWT,200WT,400WT,600WT,SS,FAT,EMA,IMF,Genomics														

Purchaser: _____ Price: \$ _____



An early maturing,
heifers first calf with
thickness and depth of
body. Well suited to
produce trade steers
and grass finished
program. U138
features high growth
milk and top 4% IMF.
HOMOZYGOUS POLLED

Lot 41 REMOLEA UNCLE U138 (PP)

BORN: 02/09/2023 **MOLU138** **EYE PIGMENT:** 100/100

ELITE TRUST K215 (AI) (S)
GLENTREVOR TRUST N909 (AI) (PP)
GLENTREVOR SIRIKIT J504 (AI) (P)
Sire: TOBRUK SHEPHERD S33 (AI) (ET) (PP)
ARDO HUSTLER 4110 (IMP NZL) (P)
TOBRUK ROSE J6 (ET) (PP)
PINE HILL MARITANA A619 (AI) (P)
YAMBRO CONRAD B88 (P)
RUSSLYNN JACK FLASH (P)
RUSSLYNN PURITY E33 (AI) (P)
Dam: REMOLEA MARJORIE S161 (P)
YALGOO ZAC F083 (AI) (P)
REMOLEA MARJORIE J135 (P)
REMOLEA MARJORIE Z107 (P)

Genetic status:
POLL C-Homozygous Polled
(PPcG)JEF-HYF-DLF

JUNE 2025 HEREFORD BREEDPLAN														Sustainability Production Index
	CEDir	CEDtrs	GL	BW	200G	400G	600G	Milk	SS	EMA	Rib	Rump	IMF	
EBV	-0.7	+4.5	+0.3	+3.9	+44	+69	+107	+23	+2.8	+3.3	+1.5	+2.1	+2.2	+173
ACC	58%	46%	72%	78%	76%	76%	77%	64%	77%	55%	57%	61%	60%	MSA Production Index
Ranking %	75	55	75	55	9	20	7	15	30	75	25	25	4	+156
BWT,200WT,400WT,600WT,SS,FAT,EMA,IMF,Genomics														

Purchaser: _____ Price: \$ _____



An early maturing
Nipper son: jam
packed full of red
meat. Appreciate the
softness and easy
doing attributes he has
to offer. Outstanding
carcase merit combining
high EMA, fats and IMF.
HOMOZYGOUS POLLED

Lot 42 REMOLEA UPSURGE U124 (PP)

BORN: 26/08/2023 **MOLU124** **EYE PIGMENT:** 100/100

SOUTH BUKALONG WALLACE 2 (P)
DALKEITH L012 (AI) (ET) (P)
MARKOWEN LADYBIRD A18 (AI) (P)
Sire: DALKEITH NIPPER N082 (P)
MATARIKI 100380 (IMP NZL) (P)
DALKEITH MINERVA LASS L175 (AI) (P)
DALKEITH MINERVA LASS 99 ET1 (AI) (ET) (S)
GRASSMERE SPARK 555 (IMP NZL) (PP)
BOWEN SPARK L76 (AI) (PP)
BOWEN LEONORA E117 (P)
Dam: REMOLEA GEM P127 (P)
BOWEN ULTRA U40 (P)
REMOLEA GEM D88 (P)
REMOLEA GEM U40 (P)

Genetic status:
POLL C-Homozygous Polled
(PPcG)JEF-HYF-DLF

JUNE 2025 HEREFORD BREEDPLAN														Sustainability Production Index
	CEDir	CEDtrs	GL	BW	200G	400G	600G	Milk	SS	EMA	Rib	Rump	IMF	
EBV	+15.0	+9.3	-4.8	+1.1	+27	+46	+63	+15	+2.9	+6.2	+2.2	+3.4	+1.3	+174
ACC	57%	45%	72%	79%	76%	75%	77%	63%	76%	53%	57%	61%	59%	MSA Production Index
Ranking %	15	25	5	15	90	90	90	90	25	15	6	5	25	+186
BWT,200WT,400WT,600WT,SS,FAT,EMA,IMF,Genomics														

Purchaser: _____ Price: \$ _____



U223 offers some serious growth and horsepower. He is as long as a coal train. A bull to add some serious kilograms to his progeny. Top 1% 400-day, 600-day weight and scrotal size. Full brother (Remolea Todd T227) sold 2024 to Taylor Grazing Injune. HETEROZYGOUS POLLED.

Lot 43 REMOLEA UNBELIEVABLE U223 (S)

BORN: 04/11/2023 **MOLU**U223 **EYE PIGMENT:** 100/100

CAPETHORNE HOT SHOT 03 22 (P)
MATARIKI HOLY - SMOKE (IMP NZL) (P)
MATARIKI GIRLIE 00323 (P)
Sire: CALLAWAY WRL HS MEGATRON M004 (AI) (TW) (PP)
NOROLLE NEW DIMENSION J270 (P)
KENROY LYDIA (AI) (P)
MARKOWEN LYDIA E61 (AI) (P)
ARDO HUSTLER 4110 (IMP NZL) (P)
ELITE 4110 F88 (AI) (S)
ELITE ORCHESTRA Y12 B2 (AI) (P)
Dam: REMOLEA NEEDFULL N155 (P)
BOWEN ESPLANADE E332 (AI) (PP)
REMOLEA NEEDFULL H72 (P)
REMOLEA NEEDFULL W118 (P)

Genetic status:
POLL C-Heterozygous Polled
(HFc),IEF-HYF,DLF,

JUNE 2025 HEREFORD BREEDPLAN														Sustainability Production Index
	CEDir	CEDtrs	GL	BW	200G	400G	600G	Milk	SS	EMA	Rib	Rump	IMF	
EBV	-3.1	-3.0	-4.6	+7.0	+48	+90	+135	+26	+4.7	+2.6	-0.8	-0.7	+0.5	+138
ACC	59%	49%	70%	79%	77%	76%	77%	66%	78%	55%	57%	61%	60%	MSA Production Index
Ranking %	80	91	5	94	3	1	1	6	1	90	97	94	65	+595
BWT,200WT,400WT,600WT,SS,FAT,EMA,IMF,Genomics														

Purchaser: _____ Price: \$ _____



A calving ease Quinn son, with softness, quality and a sire's head. Very suitable for heifer joining, combining high calving ease, short gestation and low birth weight. Strong fertility traits encompassing top 15% scrotal size and top 7% days to calving. HOMOZYGOUS POLLED

Lot 44 REMOLEA UNIVERSAL U046 (PP)

BORN: 09/08/2023 **MOLU**U046 **EYE PIGMENT:** 100/100

ALLENDALE ANZAC E114 (PP)
WIRRUNA MATTY M288 (AI) (ET) (PP)
WIRRUNA CIRCLE H13 (AI) (PP)
Sire: TOBRUK QUINN Q006 (AI) (PP)
TOBRUK LENNOX (ET) (PP)
TOBRUK DAISY N12 (PP)
TOBRUK DAISY (AI) (P)
YAMBRO CONRAD B88 (P)
RUSSLYNN JACK FLASH (P)
RUSSLYNN PURITY E33 (AI) (P)
Dam: REMOLEA MARJORIE Q083 (P)
TREFOIL PARK BLAIR F35 (AI) (P)
REMOLEA MARJORIE K153 (P)
REMOLEA MARJORIE E148 (P)

Genetic status:
POLL C-Homozygous Polled
(PcPc),IEF-HYF,DLF,

JUNE 2025 HEREFORD BREEDPLAN														Sustainability Production Index
	CEDir	CEDtrs	GL	BW	200G	400G	600G	Milk	SS	EMA	Rib	Rump	IMF	
EBV	+13.3	+10.9	-2.6	+2.5	+39	+56	+82	+17	+3.4	+0.9	+1.1	+1.7	+1.5	+185
ACC	59%	48%	70%	79%	76%	75%	77%	63%	76%	54%	57%	61%	60%	MSA Production Index
Ranking %	20	20	20	30	30	60	50	55	15	99	40	35	20	+175
CE,BWT,200WT,400WT,600WT,SS,FAT,EMA,IMF,Genomics														

Purchaser: _____ Price: \$ _____



A Ledger son with length, depth of body and stands on good feet and legs. Remolea Update features top 5% 200-day weight and top 3% scrotal size. HOMOZYGOUS POLLED.

Lot 45 REMOLEA UPDATE U081 (PP)

BORN: 16/08/2023 **MOLU**U081 **EYE PIGMENT:** 100/100

ALLENDALE YACKA (AI) (P)
ALLENDALE ANZAC E114 (PP)
ALLENDALE DAWN B22 (AI) (ET) (P)
Sire: WIRRUNA LEDGER L285 (AI) (PP)
GH ADAMS TARGET 5S (IMP CAN) (P)
WIRRUNA DOREEN G115 (AI) (P)
WIRRUNA DOREEN A37 (AI) (P)
KARINA CHERRY Z8 (PP)
TYCOLAH MCCOY J122 (P)
TYCOLAH COUNTESS F33 (P)
Dam: REMOLEA JANE N005 (P)
THE COTTAGE MURRAY A18 (P)
REMOLEA JANEJ02 (P)
REMOLEA JANE Z57 (P)

Genetic status:
POLL C-Homozygous Polled
(PcPc),IEF-HYF,DLF,

JUNE 2025 HEREFORD BREEDPLAN														Sustainability Production Index
	CEDir	CEDtrs	GL	BW	200G	400G	600G	Milk	SS	EMA	Rib	Rump	IMF	
EBV	-14.0	+0.5	-0.1	+7.9	+46	+67	+90	+10	+4.3	+1.6	-0.1	+0.0	-0.8	+110
ACC	64%	55%	74%	80%	78%	77%	78%	69%	79%	59%	61%	65%	64%	MSA Production Index
Ranking %	97	80	70	98	5	25	35	94	3	98	90	85	99	+583
CE,BWT,200WT,400WT,600WT,SS,FAT,EMA,IMF,Genomics														

Purchaser: _____ Price: \$ _____



A November drop
Megatron son with
weight for age featuring
a terrific skin type.
Urgent is in the top
20% 400 day, 15%
600-day weight and
above average IMF.
HOMOZYGOUS POLLED.

Lot 46 REMOLEA URGENT U220 (PP)

BORN: 02/11/2023 **MOLU**U220 **EYE PIGMENT:** 100/100

CAPETHORNE HOT SHOT 03 22 (P)
MATARIKI HOLY - SMOKE (IMP NZL) (P)
MATARIKI GIRLIE 00323 (P)
Sire: CALLAWAY WRL HS MEGATRON M004 (AI) (TW) (PP)
NOROLLE NEW DIMENSION J270 (P)
KENROY LYDIA (AI) (P)
MARKOWEN LYDIA E61 (AI) (P)
ROTHERFIELD RUMBLE F50 (P)
GLEN GOULBURN BOSTON J81 (AI) (P)
GLEN GOULBURN BRACELET F67 (P)
Dam: TERRANEIL MARY M66 (P)
GLEN GOULBURN HARICOT E71 (PP)
TERRANEIL MARY J16 (P)
TERRANEIL MARY D63 (P)

Genetic status:
POLL C-Homozygous Polled
(PPc), JEF-HYF-DLF,

JUNE 2025 HEREFORD BREEDPLAN														Sustainability Production Index
	CEDir	CEDtrs	GL	BW	200G	400G	600G	Milk	SS	EMA	Rib	Rump	IMF	
EBV	-2.1	-15.3	-2.8	+5.7	+39	+68	+100	+11	+2.5	+1.8	+0.6	+1.4	+1.1	+599
ACC	58%	48%	69%	78%	76%	75%	77%	64%	77%	54%	57%	61%	60%	MSA Production Index
Ranking %	75	99	20	80	30	20	15	92	40	97	65	45	35	+580
BWT,200WT,400WT,600WT,SS,FAT,EMA,IMF,Genomics														

Purchaser: _____ Price: \$ _____



A long and growthy
Fairfax son who will put
some serious growth
and grunt into his
progeny. He features
top 3% 200-day weight,
top 10% 400 and top
9% 600-day weight.
HOMOZYGOUS POLLED.

Lot 47 REMOLEA ULTRA U098 (PP)

BORN: 20/08/2023 **MOLU**U098 **EYE PIGMENT:** 100/100

ALLENDALE ANZAC E114 (PP)
WIRRUNA NIXON N168 (AI) (TW) (PP)
WIRRUNA DIDO H45 (AI) (PP)
Sire: TREFOIL PARK FAIRFAX S014 (AI) (PP)
YARRANDABBIE JINGLE J018 (AI) (PP)
TREFOIL PARK FANCY P004 (AI) (P)
TREFOIL PARK FANCY E24 (P)
ARDO HUSTLER 4110 (IMP NZL) (P)
ELITE 4110 F88 (AI) (S)
ELITE ORCHESTRA Y12 B2 (AI) (P)
Dam: REMOLEA JANE Q048 (P)
THE COTTAGE MURRAY A18 (P)
REMOLEA JANEJ02 (P)
REMOLEA JANE Z57 (P)

Genetic status:
POLL C-Homozygous Polled
(PPc), JEF-HYF-DLF,

JUNE 2025 HEREFORD BREEDPLAN														Sustainability Production Index
	CEDir	CEDtrs	GL	BW	200G	400G	600G	Milk	SS	EMA	Rib	Rump	IMF	
EBV	-15.4	+1.6	-0.8	+7.4	+49	+73	+104	+10	+2.2	+3.3	-0.4	-0.3	+0.1	+5107
ACC	55%	44%	69%	78%	75%	73%	75%	61%	74%	51%	54%	58%	57%	MSA Production Index
Ranking %	98	75	55	96	3	10	9	94	55	75	92	90	85	+586
CE,BWT,200WT,400WT,600WT,SS,FAT,EMA,IMF,Genomics														

Purchaser: _____ Price: \$ _____



An upstanding Nockout
son from a consistent
McCoy female. Full
brother sold in 2023 to
Taylor Grazing, Injune
for \$11,000. U074
features top 15% growth
EBVs, top 4% milk.
HOMOZYGOUS POLLED.

Lot 48 REMOLEA UMBIRAM U074 (TW) (PP)

BORN: 13/08/2023 **MOLU**U074 **EYE PIGMENT:** 100/100

WIRRUNA HARTWIG H297 (P)
WIRRUNA KALIMNA K326 (PP)
WIRRUNA CORA H303 (AI) (ET) (P)
Sire: YAVENVALE NOCKOUT N312 (AI) (PP)
MINLACOWIE GRIFFIN (PP)
YAVENVALE CORISANDE L385 (AI) (ET) (PP)
YAVENVALE CORISANDE H143 (AI) (P)
KARINA CHERRY Z8 (PP)
TYCOLAH MCCOY J122 (P)
TYCOLAH COUNTESS F33 (P)
Dam: REMOLEA NEEDFULL P106 (P)
THE COTTAGE MURRAY A18 (P)
REMOLEA NEEFULL E91 (P)
REMOLEA NEEDFULL V113 (P)

Genetic status:
POLL C-Homozygous Polled
(PPc), JEF-HYF-DLF,

JUNE 2025 HEREFORD BREEDPLAN														Sustainability Production Index
	CEDir	CEDtrs	GL	BW	200G	400G	600G	Milk	SS	EMA	Rib	Rump	IMF	
EBV	-1.7	+1.8	+0.4	+6.2	+43	+72	+103	+27	+2.3	+4.0	-0.4	-0.4	+0.0	+5159
ACC	62%	52%	74%	79%	78%	77%	78%	68%	79%	59%	61%	65%	64%	MSA Production Index
Ranking %	75	75	75	90	15	15	10	4	50	60	92	90	90	+5129
BWT,200WT,400WT,600WT,SS,FAT,EMA,IMF,Genomics														

Purchaser: _____ Price: \$ _____



An early maturing Rainmaker son with strength of spine and correctness. He features positive calving ease, top 1% gestation length, above average growth EBVs, scrotal and IMF. **HOMOZYGOUS POLLED.**

Lot 49 REMOLEA URANIUM U013 (PP)

BORN: 30/07/2023 **MOLU013** **EYE PIGMENT:** 100/100

MINLACOWIE GRIFFIN (PP)
YAVENVALE KINGPIN K317 (PP)
YAVENVALE TREASURE D403 (P)
Sire: YAVENVALE RAINMAKER R464 (AI) (PP)
YAVENVALE GUARDSMAN G471 (AI) (P)
YAVENVALE JULIET M535 (P)
YAVENVALE JULIET J031 (P)
WIRRUNA KALIMNA K326 (PP)
YAVENVALE NOCKOUT N312 (AI) (PP)
YAVENVALE CORISANDE L385 (AI) (ET) (PP)
Dam: REMOLEA JANE R024 (P)
TYCOLAH MCCOY J122 (P)
REMOLEA JANE N005 (P)
REMOLEA JANEJ02 (P)

Genetic status:
POLL C-Homozygous Polled
(PPCc),IEF-HYF-DLF,

JUNE 2025 HEREFORD BREEDPLAN

	CEDir	CEDtrs	GL	BW	200G	400G	600G	Milk	SS	EMA	Rib	Rump	IMF	Sustainability Production Index
EBV	+5.8	+5.6	-8.7	+5.1	+39	+66	+107	+20	+3.0	+3.4	+0.6	+0.9	+1.2	+159
ACC	57%	43%	74%	79%	77%	76%	77%	62%	77%	53%	56%	60%	59%	MSA Production Index
Ranking %	50	50	1	75	30	30	7	35	25	75	65	60	30	+137

CE,BWT,200WT,400WT,600WT,SS,FAT,EMA,IMF,Genomics

Purchaser: _____ Price: \$ _____



A dark red eyed young Shepherd son well suited for heifer joining. Remolea Upshot features top 20% calving ease, short gestation length and super low birth weight. Maternal brother sold in 2024 to Talwood Station for \$11,000. **HOMOZYGOUS POLLED.**

Lot 50 REMOLEA UPSHOT U233 (PP)

BORN: 03/12/2023 **MOLU233** **EYE PIGMENT:** 100/100

ELITE TRUST K215 (AI) (S)
GLENTREVOR TRUST N909 (AI) (PP)
GLENTREVOR SIRIKIT J504 (AI) (P)
Sire: TOBRUK SHEPHERD S33 (AI) (ET) (PP)
ARDO HUSTLER 4110 (IMP NZL) (P)
TOBRUK ROSE J6 (ET) (PP)
PINE HILL MARITANA A619 (AI) (P)
MATARIKI HOLY - SMOKE (IMP NZL) (P)
CALLAWAY WRL HS MEGATRON M004 (AI) (TW) (PP)
KENROY LYDIA (AI) (P)
Dam: REMOLEA MARJORIE Q051 (P)
BOWEN GEORGE G25 (P)
REMOLEA MARJORIE M111 (P)
REMOLEA MARJORIE H83 (P)

Genetic status:
POLL C-Homozygous Polled
(PPCc),IEF-HYF-DLF,

JUNE 2025 HEREFORD BREEDPLAN

	CEDir	CEDtrs	GL	BW	200G	400G	600G	Milk	SS	EMA	Rib	Rump	IMF	Sustainability Production Index
EBV	+13.7	+10.8	-3.3	+0.4	+27	+41	+66	+15	+1.9	+2.7	+1.1	+1.4	+0.1	+151
ACC	57%	46%	71%	78%	76%	75%	77%	64%	76%	55%	57%	61%	60%	MSA Production Index
Ranking %	20	20	15	8	90	94	85	70	70	90	40	45	85	+149

BWT,200WT(x2),400WT(x2),SS,FAT,EMA,IMF,Genomics

Purchaser: _____ Price: \$ _____



A good bull late in the catalogue. U155 features softness, quality and easy doing attributes. Unplaced is from a very consistent dam within the Remolea herd who has bred 4 previous sons selling to a top of \$26,000 to Narrien Cattle Co, Clermont. **HOMOZYGOUS POLLED.**

Lot 51 REMOLEA UNPLACED U155 (PP)

BORN: 04/09/2023 **MOLU155** **EYE PIGMENT:** 100/100

CAPETHORNE HOT SHOT 03 22 (P)
MATARIKI HOLY - SMOKE (IMP NZL) (P)
MATARIKI GIRLIE 00323 (P)
Sire: CALLAWAY WRL HS MEGATRON M004 (AI) (TW) (PP)
NOROLLE NEW DIMENSION J270 (P)
KENROY LYDIA (AI) (P)
MARKOWEN LYDIA E61 (AI) (P)
KOANUI ROCKET 0219 (IMP NZL) (P)
BOWEN ESPLANADE E332 (AI) (PP)
BOWEN ROLLINA B347 (P)
Dam: REMOLEA DAINTY L103 (P)
KROY PARK ZEST Z34 (P)
REMOLEA DAINTY D18 (P)
REMOLEA DAINTY A133 (P)

Genetic status:
POLL C-Homozygous Polled
(PPCc),IEF-HYF-DLF,

JUNE 2025 HEREFORD BREEDPLAN

	CEDir	CEDtrs	GL	BW	200G	400G	600G	Milk	SS	EMA	Rib	Rump	IMF	Sustainability Production Index
EBV	+9.1	+4.2	-3.6	+3.3	+30	+47	+59	+17	+4.7	+3.4	+1.6	+2.9	+0.8	+112
ACC	60%	50%	70%	80%	77%	76%	78%	66%	79%	56%	58%	62%	61%	MSA Production Index
Ranking %	35	60	10	45	75	85	91	55	1	75	20	9	50	+115

BWT,200WT,400WT,600WT,SS,FAT,EMA,IMF,Genomics

Purchaser: _____ Price: \$ _____



A mobile and attractive Nockout son with spring of rib and width through his top line. He has a well-balanced set of EBVs combining calving ease, above average growth, high milk, high scrotal, EMA and IMF ranked in the top 1% of the breed. Carcase quantity and quality.

HOMOZYGOUS POLLED.

Lot 52 REMOLEA URBAN U217 (PP)

BORN: 25/10/2023 MOLU217 EYE PIGMENT: 100/100

WIRRUNA HARTWIG H297 (P)
WIRRUNA KALIMNA K326 (PP)
WIRRUNA CORA H303 (AI) (ET) (P)
Sire: YAVENVALE NOCKOUT N312 (AI) (PP)
MINLACOWIE GRIFFIN (PP)
YAVENVALE CORISANDE L385 (AI) (ET) (PP)
YAVENVALE CORISANDE H143 (AI) (P)
DALKEITH L012 (AI) (ET) (P)
DALKEITH NIPPER N082 (P)
DALKEITH MINERVA LASS L175 (AI) (P)
Dam: REMOLEA PAGAN R091 (P)
TREFOIL PARK BLAIR F35 (AI) (P)
REMOLEA PAGAN J56 (P)
REMOLEA PAGAN Z53 (P)

Genetic status:
POLL C-Homozygous Polled
(PcPc),IEF-HYF-DLF.

JUNE 2025 HEREFORD BREEDPLAN														Sustainability Production Index
	CEDir	CEDtrs	GL	BW	200G	400G	600G	Milk	SS	EMA	Rib	Rump	IMF	
EBV	+9.9	+10.1	+0.7	+3.3	+43	+69	+89	+26	+4.0	+5.2	+1.8	+2.3	+2.9	+5217
ACC	62%	52%	75%	80%	78%	77%	79%	68%	78%	60%	62%	65%	65%	MSA Production Index
Ranking %	30	20	80	45	15	20	35	6	4	30	15	20	1	+5214
BWT,200WT,400WT,600WT,SS,FAT,EMA,IMF,Genomics														

Purchaser: _____ Price: \$ _____



As a custom here at Remolea, we always like to finish with a top young sire and 2025 is no exception. Victor is a stylish, high indexing February drop featuring high growth EBVs, above average milk, positive fats and top 2% IMF.

HOMOZYGOUS POLLED.

Lot 53 REMOLEA VICTOR V004 (PP)

BORN: 18/02/2024 MOLV004 EYE PIGMENT: 100/100

ELITE TRUST K215 (AI) (S)
GLENTREVOR TRUST N909 (AI) (PP)
GLENTREVOR SIRIKIT J504 (AI) (PP)
Sire: TOBRUK SHEPHERD S33 (AI) (ET) (PP)
ARDO HUSTLER 4110 (IMP NZL) (P)
TOBRUK ROSE J6 (ET) (PP)
PINE HILL MARITANA A619 (AI) (P)
MATARIKI HOLY - SMOKE (IMP NZL) (P)
CALLAWAY WRL HS MEGATRON M004 (AI) (TW) (PP)
KENROY LYDIA (AI) (P)
Dam: REMOLEA NEEDFULL Q035 (P)
BOWEN GEORGE G25 (P)
REMOLEA NEEDFULL M174 (P)
REMOLEA NEEDFULL H22 (P)

Genetic status:
POLL C-Homozygous Polled
(PcPc),IEF-HYF-DLF.

JUNE 2025 HEREFORD BREEDPLAN														Sustainability Production Index
	CEDir	CEDtrs	GL	BW	200G	400G	600G	Milk	SS	EMA	Rib	Rump	IMF	
EBV	-3.7	+5.9	-2.8	+4.2	+46	+80	+116	+20	+3.2	+2.6	+1.9	+2.8	+2.4	+5179
ACC	57%	46%	71%	78%	76%	75%	76%	63%	76%	54%	56%	61%	60%	MSA Production Index
Ranking %	80	45	20	60	5	4	3	35	15	90	15	10	2	+5163
BWT,200WT,400WT,SS,FAT,EMA,IMF,Genomics														

Purchaser: _____ Price: \$ _____



Vaccination Record:

03/08/2024 blooded

03/10/2024 & 23/11/2024

3 day sickness (BEF) (Booster due November 2025)

14/04/2025 7 in1 booster due April 2026

14/04/2025 & 21/05/2025

Pestigard (Booster due May 2026)

14/04/2025 & 21/05/2025

Vibrovax (Booster due May 2026)

21/05/2025 Commodus Injectable



SIRES OF THE FUTURE



YAVENVALE TOP NOTCH T488 (AI) (ET) (PP)

SCHU-LAR ON TARGET 22S (IMP USA) (ET) (P)

KCF BENNETT ENCORE Z311 (ET) (PP)

KCF MISS REVOLUTION X338 (ET) (P)

Sire: TARCOMBE ENCORE Q053 (AI) (PP)

WIRRUNA FORT F382 (ET) (PP)

TARCOMBE CORA L047 (P)

TARCOMBE CORA J034 (AI) (H)

MOUNT DIFFICULT CADBURY (AI) (P)

TOBRUK MAVERICK (AI) (PP)

TOBRUK DAISY (AI) (P)

Dam: YAVENVALE DUCHESS P300 (AI) (P)

BOWEN JUSTICE J51 (AI) (ET) (PP)

YAVENVALE DUCHESS M323 (P)

YAVENVALE DUCHESS K131 (P)

We believe behind every great bull is a powerful cow. For this reason, we have invested in 2 sons of the YavenVale Duchess P300 cow. Top Notch combines phenotype and performance. He is as thick as they come and has fine, sleek skin with well hooded eyes; providing optimal suitability to the QLD climate. He offers explosive growth, Top 1% 200-and-400-day weight, Top 3% EMA, Top 10% Retail Feed Yield and Top 5% IMF and all \$ indexes. T488 was purchased in partnership with Newcomen Herefords.

JUNE 2025 HEREFORD BREEDPLAN														Sustainability Production Index
	CEDir	CEDtrs	GL	BW	200G	400G	600G	Milk	SS	EMA	Rib	Rump	IMF	
EBV	+0.8	+4.2	-2.6	+6.2	+50	+87	+111	+23	+2.5	+6.4	+0.1	-0.4	+1.6	+\$200
ACC	60%	48%	76%	80%	78%	77%	78%	67%	78%	59%	60%	64%	64%	MSA Production Index
Ranking %	70	60	20	90	2	1	5	15	40	10	80	90	15	+\$181
BWT,200WT,400WT,SS,FAT,EMA,IMF,Genomics														

SIRES OF THE FUTURE



YAVENVALE TOP SECRET T565 (AI) (ET) (PP)

JUNE 2025 HEREFORD BREEDPLAN														Sustainability Production Index
	CEDir	CEDtrs	GL	BW	200G	400G	600G	Milk	SS	EMA	Rib	Rump	IMF	
EBV	+13.3	+12.7	-4.8	+2.5	+40	+71	+94	+20	+2.1	+7.4	+0.4	+0.2	+2.7	+\$215
ACC	61%	48%	76%	80%	78%	78%	78%	68%	79%	59%	61%	64%	65%	MSA Production Index
Ranking %	20	9	5	30	25	15	25	35	60	4	70	80	1	+\$212
BWT,200WT,400WT,SS,FAT,EMA,IMF,Genomics														

Top Secret is a low birth weight bull with length, muscle shape and a sleek skin and hair type. T565 has short gestation, below average birth, Top 9% 200-and-400-day weight, Top 4% EMA and Top 2% IMF. Another brother topped the Yavenvale sale, selling for \$96,000.

YAVENVALE DUCHESS P300 (dam of T488 & T565)



SUPPORT YOUR CATTLE PRODUCTION

With Animal Health Supplies
from Pursehouse Rural
plus

Agricultural Chemical

Seed & Fertiliser

Agronomy Services

Rural Merchandise

Feed & Produce

Pursehouse Rural Clifton. 58 King St.
07 4612 4800 Mon - Fri 8am to 5pm

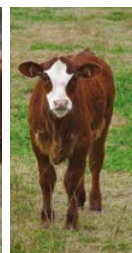


PURSEHOUSE
RURAL

Growing Together for Success

REMOLEA GENETICS

ADDING VALUE TO THE NORTHERN BEEF INDUSTRY





304 O'Leary Road | Ellangowan (via Clifton) Qld 4361

Remolea is located 48 kms down the Condamine River from Warwick, 24 kms west of Clifton and 64 kms south of Toowoomba. Established in 1962, our aim has always been to breed soft easy doing cattle. We place great emphasis on functional, fertile cattle, as they are run under commercial conditions. Temperament, skin, hair colour & quality are high on our priorities. We have also endeavoured to breed an even line of cattle (bulls) rather than individuals.

Thank you for supporting the 2025 Annual Bull Sale



**O'Leary's
REMOLEA
Poll Herefords**